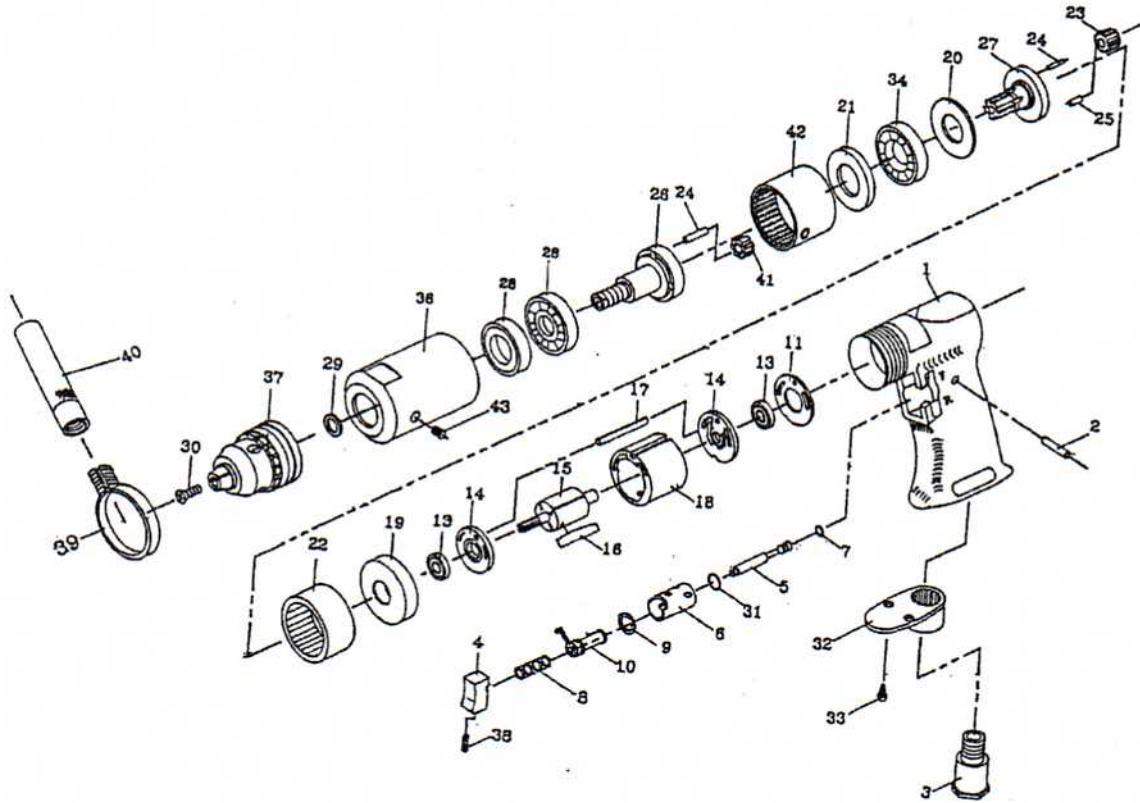


# PARTS BREAKDOWN

# 6-786

## 1/2" Drive Reversible Air Drill



| REF. NO. | PART NO.         | DESCRIPTION     | QTY. |
|----------|------------------|-----------------|------|
| 1        | 76201            | Motor Housing   | 1    |
| 2        | 76202            | Pin             | 1    |
| 3        | <del>78803</del> | Air Inlet       | 1    |
| 4        | 78804            | Trigger         | 1    |
| 5        | 76205            | Valve Stem      | 1    |
| 6        | 76206            | Reverse Bushing | 1    |
| 7        | 233A07           | O-Ring          | 1    |
| 8        | 78808            | Valve Spring    | 1    |
| 9        | 78609            | O-Ring          | 1    |
| 10       | 78610            | Reverse Lever   | 1    |
| 11       | <del>78711</del> | Motor Gasket    | 1    |
| 13       | 21114            | Ball Bearing    | 2    |
| 14       | <del>78714</del> | End Plate       | 2    |
| 15       | 76215            | Rotor           | 1    |
| 16       | 78816            | Rotor Blades    | 5    |
| 17       | 78617            | Pin             | 1    |
| 18       | 78718            | Cylinder        | 1    |
| 19       | 78619            | Spacer          | 1    |
| 20       | 78620            | Spacer          | 1    |
| 21       | 78621            | Spacer/Washer   | 1    |
| 22       | 78822            | Internal Gear   | 1    |

| REF. NO. | PART NO.         | DESCRIPTION                        | QTY. |
|----------|------------------|------------------------------------|------|
| 23       | <del>78823</del> | Planet Gear <i>RS79523</i>         | 3    |
| 24       | <del>78724</del> | Pin <i>(included w/#26,27)</i>     | 6    |
| 25       | 76225            | Bushing                            | 3    |
| 26       | 78626            | Work Spindle <i>with pins</i>      | 1    |
| 27       | 78627            | Reduction Spindle <i>with pins</i> | 1    |
| 28       | 21118            | Ball Bearing                       | 2    |
| 29       | 78829            | Chuck Spacer                       | 1    |
| 30       | 78630            | Chuck Screw                        | 1    |
| 31       | 76231            | O-Ring                             | 1    |
| 32       | 76232            | Exhaust Diffuser                   | 1    |
| 33       | 76233            | Screw                              | 2    |
| 34       | 29120            | Ball Bearing                       | 1    |
| 36       | 78636            | Clamp Nut                          | 1    |
| 37       | 87109            | Drill Chuck (1/2") with Key        | 1    |
| 38       | 78638            | Set Screw                          | 1    |
| 39       | 78639            | Retainer                           | 1    |
| 40       | <del>78640</del> | Handle <i>RS79440N</i>             | 1    |
| 41       | 78641            | Planet Gear                        | 3    |
| 42       | 78642            | Internal Gear                      | 1    |
| 43       | 78643            | Set Screw                          | 1    |

*RS87106KK Key only for 87106*