

Model 7797 transmission jack is a mobile lifting device having a lift platform assembly suited to retaining an automotive transmission, and other driveline components such as transfer cases and trans-axles, and is designed to support and stabilize the component during its installation or removal from a vehicle.

# 7797

## 1000 LB Capacity Telescopic Transmission Jack

- Two Stage Telescopic Design Provides Extra Range
- Load Restraint Chain Provided
- Pull Handle for Easy Transporting of Load
- Swivel Casters for Ease of Mobility

### ! WARNING

THE USE OF THIS JACK IS LIMITED TO THE REMOVAL, INSTALLATION, AND TRANSPORTATION IN THE LOWERED POSITION, OF TRANSMISSIONS AND DIFFERENTIALS. IT MAY BE USED WITH APPROPRIATE ADAPTERS MANUFACTURED SPECIFICALLY FOR THE JACK TO HANDLE OTHER COMPONENTS, SUCH AS REAR AXLE UNITS AND TRANSFER CASES, WITHIN THE WEIGHT LIMITATIONS SPECIFIED. NO ALTERATION TO THE JACK OR ADAPTERS SHALL BE MADE.

BE SURE THE VEHICLE IS APPROPRIATELY SUPPORTED BEFORE STARTING REPAIRS. DO NOT OVERLOAD. OVERLOADING CAN CAUSE DAMAGE TO OR FAILURE OF THE JACK.

ONLY ATTACHMENTS AND/OR ADAPTERS SUPPLIED BY THE MANUFACTURER SHALL BE USED.

THIS JACK IS DESIGNED FOR USE ONLY ON HARD LEVEL SURFACES CAPABLE OF SUSTAINING THE LOAD. USE ON OTHER THAN HARD LEVEL SURFACES CAN RESULT IN JACK INSTABILITY AND POSSIBLE LOSS OF LOAD.

READ, STUDY AND UNDERSTAND THE OPERATING MANUAL PACKED WITH THIS JACK BEFORE OPERATING.

FAILURE TO HEED THESE WARNINGS MAY RESULT IN LOSS OF LOAD, DAMAGE TO JACK, AND/OR FAILURE RESULTING IN PROPERTY DAMAGE, PERSONAL OR FATAL INJURY.

### ! WARNING !

FOR YOUR SAFETY & TO PREVENT INJURY

Read, study and understand all warning labels and operating instructions furnished with this equipment prior to use. If any portion of this material is unclear, contact your representative for clarification. Never allow unskilled or improperly trained personnel to operate this equipment. Use of the transmission jack is limited to the removal and installation of transmissions, transaxles and vehicle components for which appropriate adapters are supplied. Do not lift or support vehicles with transmission jack.

Be sure vehicle is appropriately supported before starting repairs. This jack is not a load sustaining device. Do not overload. Overload can cause damage, failure of the jack and/or personal or fatal injury. Use only on hard level surfaces capable of sustaining the load. Use on other than hard level surfaces will result in jack instability and loss of load. Always use the load restraint chain, corner support bracket, and attachments to stabilize and firmly secure the load to the saddle. Insure load restraint chain is tight and properly positioned to effectively harness the load. Never use this jack without a load restraint chain strong enough to support the transmission. Prior to transporting the load, insure that the jack is adjusted so the saddle is in the lowest horizontal position possible, and the load is centrally located on the saddle.

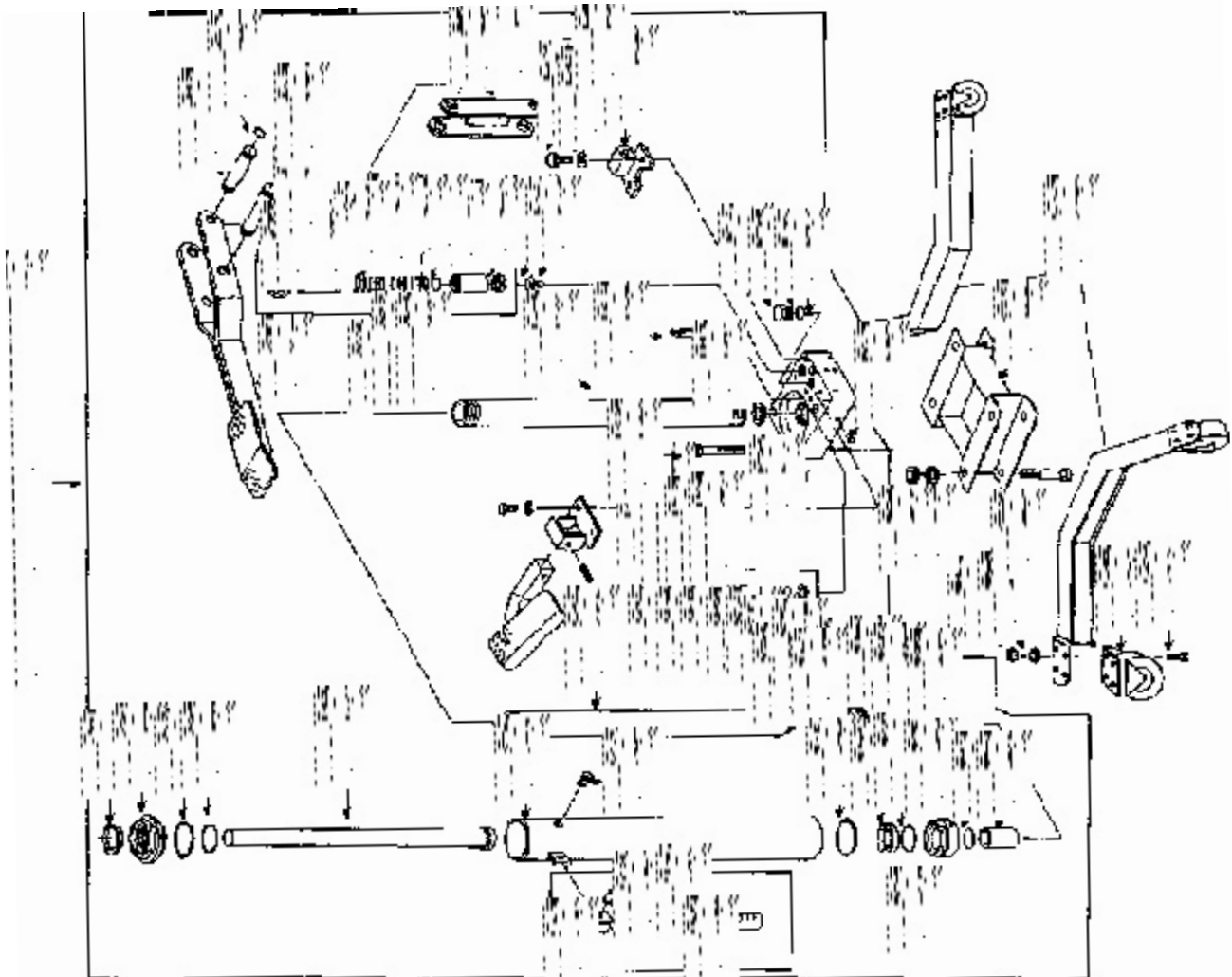
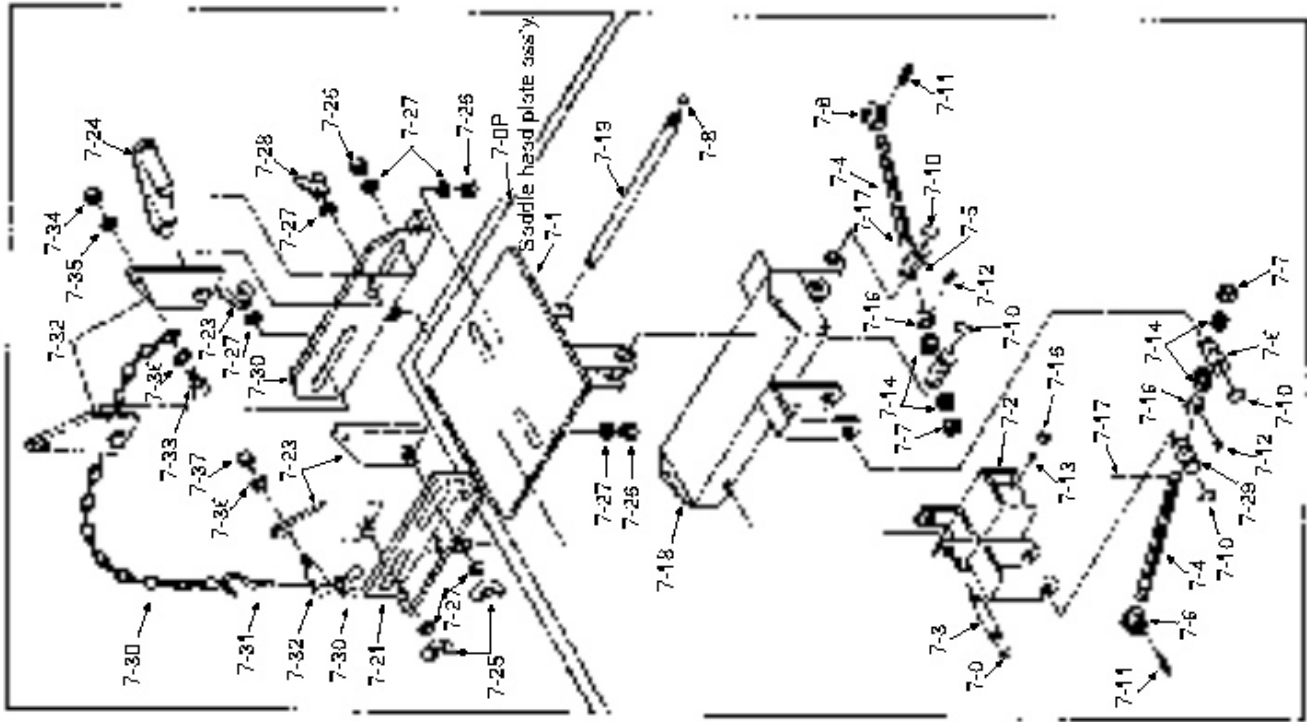
Do not modify this equipment or remove load restraint chain. It is your responsibility to keep all warning labels and instruction literature legible and intact. Replacement labels and literature are available from the factory. Failure to heed these warnings may result in equipment and/or property damage and/or personal or fatal injury.



P.O. Box 4215 • Greenville, SC 29608

# MODEL 7797 OPERATING MANUAL & PARTS BREAKDOWN

7-0A Saddle Head Attachment Assembly



# MODEL 7797 OPERATING MANUAL & PARTS BREAKDOWN

Ref. No.	Part No.	Part Description	Qty./set	Ref. No.	Part No.	Part Description	Qty./set
1-1A	779711A	Leg	2	•6-1		Steel Ball	1
1-1	779711	Chassis	1	•6-2		Release Valve Lock Nut	1
1-2	SC301	Swivel Caster	4	•6-3		Throttle	1
1-3	305004WK	Nut Inc. Ref. #1-4 – 1-5	2	•6-4		Spring	1
1-4		Spring Washer		•6-5*		O-Ring	1
1-5		Bolt		•6-6*		O-Ring	1
1-6		Bolt	4	•6-7*		Copper Packing	1
1-7		Spring Washer	4	•6-11		Snap Ring	1
1-8		Nut	4	6-8		Foot Pedal For Lowering (release valve)	1
2-1		Oil Box	1	6-9		Pedal Bracket	1
2-1A		Plug With Hex Head Hole	7	6-10		Spring Pin	1
2-2		Oil Strainer	1	6-12		Hex Head Bolt	1
2-3		Blind Bolt	1	6-13		Spring Washer	2
2-4		Copper Packing	1	7-0P	77970P	Saddle Head Plate Ass'y.	
2-5		Steel Ball	2	•7-1		Saddle Head	1
2-6		Cylinder	1	•7-2		Saddle Head Plate	1
2-7		Lock Washer	1	•7-3		Connecting Pin A	1
2-9		Copper Packing	1	•7-4		Screw	2
2-10		Bolt	3	•7-5		Female Screw A	1
2-11		Spring Washer	3	•7-6		Pin A	1
2-12		Hex Head Nut	3	•7-7		Hex Head Fluted Nut	1
3-1A		Piston Rod (Big)	1	•7-8		Grip	2
3-2		Packing Step	1	•7-9		Snap Ring	4
3-3		Grand Nut	1	•7-10		Snap Ring	8
3-4		Sleeve	1	•7-11		Snap Pin	2
3-5*		Extra Wearing	1	•7-12		Screw	2
3-6*		O-Ring	2	•7-13		Screw	1
3-7*		Back-Up Ring	1	•7-14		Thrust Bearing	4
3-8*		O-Ring	2	•7-15		Handle Collar	2
3-9*		Oil Seal	1	•7-16		Hex Head Nut	1
3-10*		O-Ring	1	•7-17		Cotter Pin	1
3-11		Plug with Hex Head Hole	1	•7-18		Tilting Base	1
3-12		Piston Rod (Small)	1	•7-19		Connecting Pin B	1
4-1		Oil Tank	1	•7-28		Female Screw A	1
4-2		Tank Nut	1	7-0A	77970A	Saddle Head Attachment Ass'y.	
4-3*		O-Ring	1	•7-20		Saddle Head Bracket A	1
4-4*		O-Ring	1	•7-21		Saddle Head Bracket B	1
4-5*		Oil Seal	1	•7-22		Saddle Head Attachment A	4
4-6		Oil Fill Cap	1	•7-23		Saddle Head Attachment B	2
4-7*		O-Ring	1	•7-24		Saddle Head Attachment C	1
5-0	779750	Pump Ass'y.		•7-25		Wing Nut	4
•5-1		Plunger	1	•7-26		Hex Head Nut	3
•5-2		Spring	1	•7-27		Washer	7
•5-3*		O-Ring	1	•7-30		Ring Chain	1
•5-4*		Oil Seal	1	•7-31		Hook With Screw	1
•5-5*		Pump Cylinder	1	•7-32		Hook Pin	1
•5-6		Copper Packing	1	•7-33		Hex Head Bolt	1
•5-7		Spring Retainer	1	•7-34		Hex Head Nut	1
5-8		Foot Pedal For Lifting	1	•7-35		Spring Washer	1
5-9		Link	1	•7-36		Washer	1
5-10		Plunger Pin	1	•7-37		Hex Head Nut	1
5-11		Pin A	1	•7-38		Spring Washer	1
5-12		Pin B	1	•7-39		Wing Nut	1
•5-13		Spring Retainer B	1	8-0		Handle Ass'y.	
5-14		Link Bracket	1	8-1		Handle	1
5-15		Cotter Pin	2	8-2		Handle Grip	1
5-16		Cotter Pin	4	8-3		Handle Pin	1
5-17		Hex Head Bolt	2	8-4		Snap Ring	2
5-18		Spring Washer	1	50-0		Hydraulic Power Unit Ass'y.	
6-0	779760	Release Valve Ass'y.	1				

\* Means these items are available as a Seal Kit Part #7797SK.

• Means items come as an assembly only.

NOTE: Reference Numbers without Part Numbers are not available.

**Specifications:**

Capacity.....1000 Lbs.  
 Lifting Range:  
     Low Height ..... 33"  
     High Height..... 73"  
 Overall Width..... 35-1/2"  
 Overall Length..... 35-1/2"  
 Saddle Tilt Forward.....30°  
 Saddle Tilt Backward.....15°  
 Saddle Side to Side.....15°  
 Shipping Weight ..... 165 Lbs.

**Assembly Instructions:**

1. Install legs to chassis by using (1-6) bolts / (1-8) nuts / (1-7) washers.
2. Install legs assembly to hydraulic power unit by using (2-10) bolts / (2-12) nuts and (2-11) washers.  
 Do not use any kind of air ratchet or air gun to tighten any bolt on this unit!
3. Assemble hydraulic power unit and saddle head plate assembly.
4. Assemble saddle head attachments. Always use the load restraint chain!

**Inspection:**

Visual inspection should be made before each use of the transmission jack, checking for leaking hydraulic fluid and damaged, loose or missing parts. Each jack must be inspected by a manufacturer's repair facility immediately, if accidentally subjected to an abnormal load or shock. Any jack which appears to be damaged in any way, is found to be badly worn, or operates abnormally **MUST BE REMOVED FROM SERVICE** until necessary repairs are made by a manufacturer's authorized repair facility. It is recommended that an annual inspection of the jack be made by a manufacturer's authorized repair facility and that any defective parts, decals or warning labels be replaced with manufacturer's specified parts.

A list of authorized repair facilities is available from the manufacturer.

**Important! Before Use . . .**

Remove reservoir filler screw and replace with vented filler screw. Check to see if oil level is up to the hole. Fill if necessary with clean hydraulic jack oil. **NOTE:** Jack will not operate properly unless vented screw is used.

Sometimes during shipment and handling air gets into the hydraulic system, causing poor lifting performance.

Bleeding the pump: With the release lever down, pump pedal several times to force excess air from the piston area. It should then be possible to raise the ram with normal foot pedal action.

Bleeding the ram: Pump the ram up until it is fully extended by slowly pumping the foot pedal. Loosen the knurled nut on top of the first stage ram. Air will be released as the saddle slowly comes down. When oil begins to leak out of the knurled nut, tighten the nut finger tight.

**Operating Instructions:**

1. Lifting: Close release valve first, pump pedal to raise saddle to contact load. Position jack so weight of load will be equally distributed on saddle, and adjust pitch and tilt controls as necessary. Position corner support brackets and secure load with Load Restraint Chain.

**WARNING:**

Always use the Load Restraint Chain, Corner Support Brackets, and attachments to stabilize and firmly secure the load to the saddle. The chain should be used as follows: Place the chain over the load, pull tight and place into slot on opposite side of saddle. Tighten wing nut.

2. Lowering: To lower jack, press foot pedal slowly to open the release valve.

**Maintenance Instructions:**

1. Lubricate regularly moving parts and related linkages of the jack.
2. Regularly check oil level with the saddle fully lowered. When adding or replacing oil, fill hydraulic oil up to the height level of oil filler entrance, after this jack is put on the level ground and two stage piston rams are fully lowered down to the lowest position.

**Owner/User Responsibility:**

The owner and/or user must have an understanding of the manufacturer's operating instructions and warnings before using the transmission jack. Warning information should be emphasized and understood. If the operator is not fluent in English the manufacturer's instructions and warnings shall be read to and discussed with the operator in the operator's native language by the purchaser/owner, making sure that the operator comprehends its contents.

Owner and/or user must study and maintain for future reference the manufacturer's instructions and pertinent warning information. Owner and/or user is responsible for keeping all warning labels and instruction manuals legible and intact. Replacement labels and literature are available from the manufacturer.