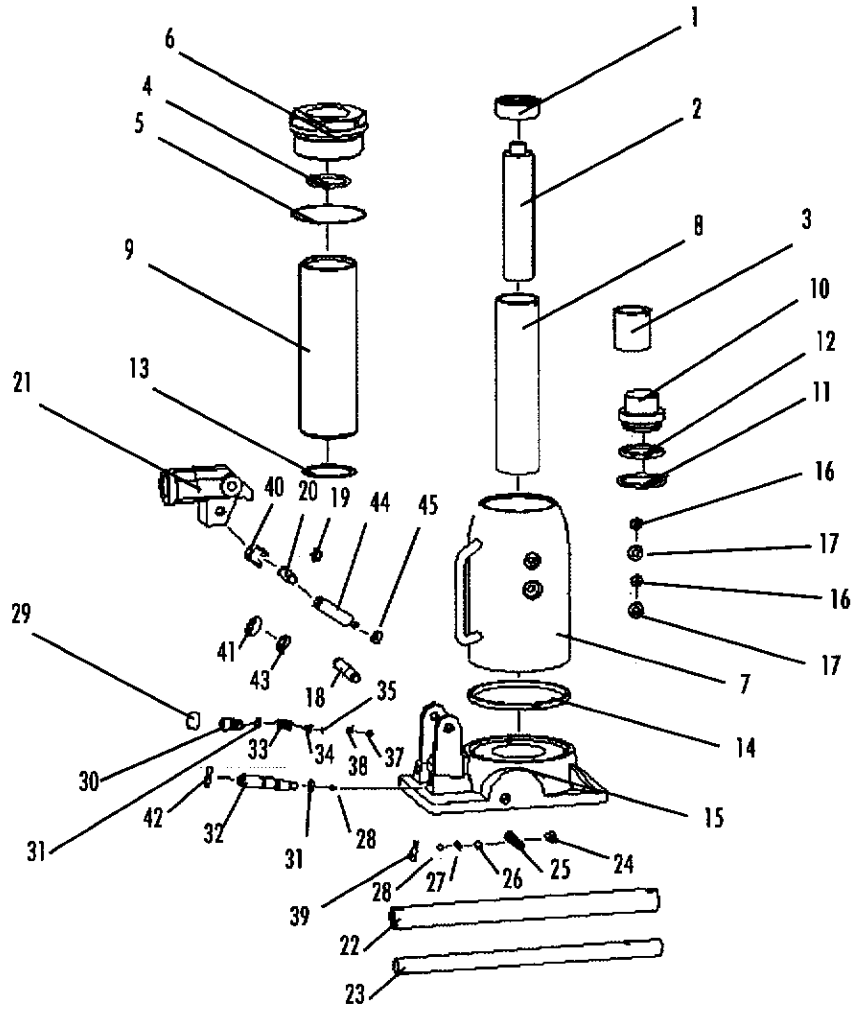


MODEL 791-2260 PARTS BREAKDOWN

06/08/00

REF. NO.	PART NO.	DESCRIPTION
1		Top Nut
2	RS26002A	Adjusting Rod (includes #3)
3		Rod Base
*4		O-Ring
*5		Seal of Nut
6		Nut
7		Reservoir
8		Piston Top
9		Cylinder
10		Piston
*11		O-Ring
*12		Bowl Washer
*13		Base Plate Washer
*14		Seal
15		Base
*16	RS26016A	Oil Plug Bolt (includes 17)
17		Washer
18		Long Pin
*19		Retaining Ring
*20		Pin
21	RS26021	Handle Socket
	RS26022A	Handle (includes 22 & 23)
22		Handle (front)
23		Handle (back)
24		Bolt
*25		Spring
*26		Base 8
*27		Ball Base
*28		Ball 6mm. Dia.
29		Safety Valve Cap
30		Safety Valve Bolt
*31		O-Ring
32	RS26032A	Release Valve (includes 31 & 42)
*33		Spring
*34		Spring Base
*35		Ball 3mm. Dia.
37		Plunger
38		Bolt
*39		Filter Oil Tube
40	RS26040	Plunger Cap
*41		Seal Cap
42	RS26042	Pin D4 *22
*43		Seal
44	RS26044A	Pump Plunger (includes 45)
*45		Seal of Pump



***REPAIR KIT**

Model	Capacity	Part No.
7912260	3 ton	RS260RK
7912270	6 ton	RS270RK
7912280	8 ton	RS280RK
7912230, 7912290	12 ton	RS290RK
7912240, 7912330	20 ton	RS2330RK