



# PROFESSIONAL LIFTING EQUIPMENT

**MODEL # 791-6620 D**  
**10 TON AIR/HYDRAULIC SERVICE JACK**



**BEFORE USING THIS DEVICE, READ THIS MANUAL COMPLETELY AND THOROUGHLY, UNDERSTAND ITS OPERATING PROCEDURES, SAFETY WARNINGS AND MAINTENANCE REQUIREMENTS.**

It is the responsibility of the device owner to make sure all personnel read this manual prior to using the device. It is also the responsibility of the device owner to keep this manual intact and in a convenient location for all to see and read. If the manual or product labels are lost or not legible, contact NAPA for replacements. If the operator is not fluent in English, the product and safety instructions shall be read to and discussed with the operator in the operator's native language by the purchaser/owner or his designee, making sure that the operator comprehends its contents.

## SPECIFICATIONS

Low Height.....	6-1/4"
Raised Height.....	22.5"
Length.....	61"
Chassis Width.....	7-3/4"
Chassis Width w/ Swivel Caster Bracket.....	18.375"
Chassis Height.....	10.5"
Handle Length.....	45-3/4"
Saddle Diameter.....	5-7/8"
Shipping Weight.....	364 lbs.

## ⚠ WARNING

- Read, study, understand and follow all instructions before operating this device.
- Inspect the jack before each use. Do not use jack if damaged, altered, modified, in poor condition, leaking hydraulic fluid, or unstable due to loose or missing hardware or parts. Make corrections before using.
- Lift only on areas of the vehicle as specified by the vehicle manufacturer.
- Wear eye protection that meets ANSI Z87.1 and OSHA standards.
- Do not use jack beyond its rated capacity.
- This is a lifting device only. Immediately after lifting, support the vehicle with jack stands capable of sustaining the load before working on the vehicle.
- Use only on a hard level surface free from obstructions so the jack is free to reposition itself during lifting and lowering operations.
- Center load on saddle. Be sure setup is stable before working on vehicle.
- Do not move or dolly the vehicle while on the jack.
- Do not use saddle adapters or saddle extenders between the stock lifting saddle and the load.
- Do not use any adapters unless approved or supplied by NAPA.
- Always lower the jack slowly and carefully.
- This product contains one or more chemicals known to the State of California to cause cancer and birth defects or other reproductive harm. Wash hands thoroughly after handling.
- Failure to heed these warnings may result in serious or fatal personal injury and/or property damage.

# OPERATING MANUAL & PARTS LIST FOR 791-6620 D

## WARNING INFORMATION



This is the safety alert symbol. It is used to alert you to potential personal injury hazards. Obey all safety messages that follow this symbol to avoid possible injury or death.

### **WARNING**

**WARNING:** Indicates a hazardous situation which, if not avoided, could result in death or serious injury.



### **IMPORTANT: READ THESE INSTRUCTIONS BEFORE OPERATING**

BEFORE USING THIS DEVICE, READ THIS MANUAL COMPLETELY AND THOROUGHLY, UNDERSTAND ITS OPERATING PROCEDURES, SAFETY WARNINGS AND MAINTENANCE REQUIREMENTS.

It is the responsibility of the owner to make sure all personnel read this manual prior to using the device. It is also the responsibility of the device owner to keep this manual intact and in a convenient location for all to see and read. If the manual or product labels are lost or not legible, contact NAPA for replacements. If the operator is not fluent in English, the product and safety instructions shall be read to and discussed with the operator in the operator's native language by the purchaser/owner or his designee, making sure that the operator comprehends its contents.

## THE NATURE OF HAZARDOUS SITUATIONS

### **WARNING**

The use of Portable Automotive Lifting Devices are subject to certain hazards that cannot be prevented by mechanical means, but only by the exercise of intelligence, care, and common sense. It is essential to have personnel involved in the use and operation of the device who are careful, competent, trained, and qualified in the safe operation of the device and its proper use when servicing motor vehicles and their components. Examples of hazards are dropping, tipping or slipping of loads caused primarily by improperly securing loads, overloading, off-centered loads, use on other than hard level surfaces, and using equipment for a purpose for which it was not intended.

## METHODS TO AVOID HAZARDOUS SITUATIONS

### **WARNING**

- Read, study, understand and follow all instructions before operating this device.
- Inspect the jack before each use. Do not use jack if damaged, altered, modified, in poor condition, leaking hydraulic fluid, or unstable due to loose or missing hardware or parts. Make corrections before using.
- Lift only on areas of the vehicle as specified by the vehicle manufacturer.
- Wear eye protection that meets ANSI Z87.1 and OSHA standards.
- Do not use jack beyond its rated capacity.
- This is a lifting device only. Immediately after lifting, support the vehicle with jack stands capable of sustaining the load before working on the vehicle.
- Use only on a hard level surface free from obstructions so the jack is free to reposition itself during lifting and lowering operations.
- Center load on saddle. Be sure setup is stable before working on vehicle.
- Do not move or dolly the vehicle while on the jack.
- Do not use saddle adapters or saddle extenders between the stock lifting saddle and the load.
- Do not use any adapters unless approved or supplied by NAPA.
- Always lower the jack slowly and carefully.
- This product contains one or more chemicals known to the State of California to cause cancer and birth defects or other reproductive harm. *Wash hands thoroughly after handling.*
- Failure to heed these warnings may result in serious or fatal personal injury and/or property damage.

## CONSEQUENCES OF NOT AVOIDING HAZARDOUS SITUATIONS

### **WARNING**

Failure to read this manual completely and thoroughly, failure to understand its OPERATING INSTRUCTIONS, SAFETY WARNINGS, MAINTENANCE INSTRUCTIONS and comply with them, and failure to comply with the METHODS TO AVOID HAZARDOUS SITUATIONS could cause accidents resulting in serious or fatal personal injury and/or property damage.

# OPERATING MANUAL & PARTS LIST FOR 791-6620 D

## SETUP

**PLEASE REFER TO THE EXPLODED VIEW DRAWING IN THIS MANUAL IN ORDER TO IDENTIFY PARTS.**

1. In order to install the handle assembly item #58 in the handle socket item #36, first align the main handle tube with the largest hole in the handle socket and the lock pin rod with the smaller hole in the handle socket.
2. Make sure the lock pin rod is in the down/lock position before insertion in the handle socket. Once the main handle tube and lock pin rod are aligned with their respective holes in the handle socket, push the handle assembly in the handle socket so the end of the handle tube engages the release valve mechanism in the bottom of the handle socket and the lock pin rod engages one of the three (3) locking holes in the item #1 frame.
3. Disengage the lock pin rod by pulling up on the lever and engaging the lever with the slot in top of the handle assembly. The handle assembly should be free to pump up and down.
4. In order to check for proper handle assembly alignment with the handle socket, see if the lock pin rod will engage with the three locking holes in the frame. Also, turn the release valve knob at the top of the handle assembly left and then right to see if the release valve u-joint in front and below the handle socket is rotating simultaneously with the turning of the knob.
5. Before Use: Air may become trapped in the hydraulic system resulting in insufficient pump stroke, spongy pump feeling or inability to pump lift arm to maximum height. Follow the air purging instructions below:

### STEP 1

- a. With the release valve knob in the closed position, turn the knob in a counterclockwise direction 2 to 3 complete revolutions.
- b. Depress the foot pedal 15 to 20 times.

### STEP 2

- a. Close the release valve knob by turning it in a clockwise direction until it stops.
- b. Depress the air valve lever 6 to 8 successive times and hold it down on the last depression. If the jack's lift arm will not raise, repeat steps 1 and 2 again.
- c. If depressing the air valve will not raise the lift arm, follow step 3.

### STEP 3

- a. Close the release valve knob by turning it clockwise until it stops. Depress the foot pedal to raise the lift arm to its maximum height.
- b. Depress the air valve while simultaneously turning the release valve 2 to 3 revolutions in a counterclockwise direction. The lift arm should lower rapidly.
- c. Close the release valve knob by turning it clockwise until it stops. Depress the air valve to see if lift arm will raise. If not, repeat step 3 several times to achieve maximum performance.

### STEP 4

If the jack's lift arm will not raise by depressing the air valve, apply 4 to 5 drops of pneumatic oil in the end of the valve's quick-disconnect nipple, reattach the air line and repeat step 2. **NOTE: The pneumatic oil may temporarily mist out from the air motor's vent, but this is normal and should not be considered a leak.**

## OPERATING INSTRUCTIONS



This is the safety alert symbol used for the OPERATING INSTRUCTIONS section of this manual to alert you to potential personal injury hazards. Obey all instructions to avoid possible injury or death. **IMPORTANT:** Before attempting to raise any vehicle, check vehicle service manual for recommended lifting surfaces.

### OPERATION:

1. **To raise load:** Turn the knob at the top of the handle assembly in a clockwise direction until tight. Position the jack under the load. Proceed to pump the handle in order to raise the lift arm to the load. As the saddle at the end of the lift arm gets closer to the load, reposition the jack so the saddle will contact the load firmly and the load is centered on the saddle. Make sure the saddle is correctly positioned. Raise the load to the desired work height. Place jack stands of appropriate capacity at the vehicle manufacturers's recommended support areas that provide stable support for the raised vehicle. **DO NOT CRAWL UNDER VEHICLE WHILE LIFTING VEHICLE OR PLACING OR REMOVING THE JACK STANDS!** Once jack stands are positioned, turn the jack handle VERY SLOWLY in a counterclockwise direction to lower the load to rest on the jack stands. Inspect the relationship between the jack stands and load to make sure the setup is stable and safe. If the setup is not stable or safe, follow the preceding steps until corrected.
2. **To lower load:** Follow the procedures mentioned in "To raise load" section of the OPERATING INSTRUCTIONS in order to raise the load off the jack stands. Once the load has cleared the jack stands, remove the jack stands from under the load and away from the work area. Turn handle very slowly in a counterclockwise direction until the load is completely lowered to the ground. Once the jack's lifting saddle has cleared the load, remove the jack from under the load. **CAUTION:** Keep hands and feet away from the hinge mechanism of the jack.

## PREVENTATIVE MAINTENANCE



This is the safety alert symbol used for the PREVENTATIVE MAINTENANCE section of this manual to alert you to potential personal injury hazards. Obey all instructions to avoid possible injury or death.

**IMPORTANT:** The number one cause of jack failure in air/hydraulic jacks is dirt and moisture in the air motor and/or hydraulic system. The shop air supply should be equipped with water and dirt filter traps that should be emptied or cleaned according to a monthly maintenance schedule. An in line oil lubricator will extend the life of air/hydraulic jacks. Inoperable jacks caused by poorly equipped or maintained shop air systems are not eligible for warranty consideration. Contaminants can also enter the air/hydraulic system when the shop air line is disconnected from the jack air line and the line is dropped on the floor. Contaminants in the air couplers, once reconnected, will be driven into the system.

# OPERATING MANUAL & PARTS LIST FOR 791-6620 D

## PREVENTATIVE MAINTENANCE (CONT.)

1. Always store the jack in a well protected area where it will not be exposed to inclement weather, corrosive vapors, abrasive dust, or any other harmful elements. The jack must be cleaned of water, snow, sand or grit before using.
2. The jack must be lubricated periodically in order to prevent premature wearing of parts. A general purpose grease must be applied to all zerk grease fittings, caster wheels, front axle wheels, elevator arm, handle base pivot bolts, release mechanism and all other bearing surfaces.

**IMPORTANT:** Any jack found to be defective as a result of worn parts due to lack of lubrication or air/hydraulic system contaminated with water, rust and/or foreign materials from the air supply or other outside source is not eligible for warranty consideration.

3. It should not be necessary to refill or top off the reservoir with hydraulic fluid unless there is an external leak. An external leak requires immediate repair which must be performed in a dirt-free environment by an authorized service center.

**IMPORTANT:** In order to prevent seal damage and jack failure, never use alcohol, hydraulic brake fluid or transmission oil in the jack.

4. Every jack owner is responsible for keeping the jack labels clean and readable. Use a mild soap solution to wash external surfaces of the jack but not any moving hydraulic components.
5. Inspect the jack before each use. Do not use the jack if any component is cracked, broken, bent, shows sign of damage or leaks hydraulic fluid. Do not use the jack if it has loose or missing hardware or components, or is modified in any way. Take corrective action before using the jack again.
6. Any hydraulic repairs within the warranty period must be performed by an authorized service center.

## TROUBLESHOOTING

PROBLEM	ACTION
1. Unit will not lift load.	Purge air from hydraulic system by following procedure under SETUP.
2. Unit will not sustain load or feels "spongy" under load.	Purge air from hydraulic system as above.
3. Unit will not lift to full height.	Purge air from hydraulic system as above.
4. Handle tends to raise up while the unit is under load.	Pump the handle rapidly several times to push oil past ball valves in power unit.
5. Unit still does not operate.	For a complete list of authorized hydraulic repair centers, please visit <a href="http://www.toolwarrantyrepair.com">www.toolwarrantyrepair.com</a>

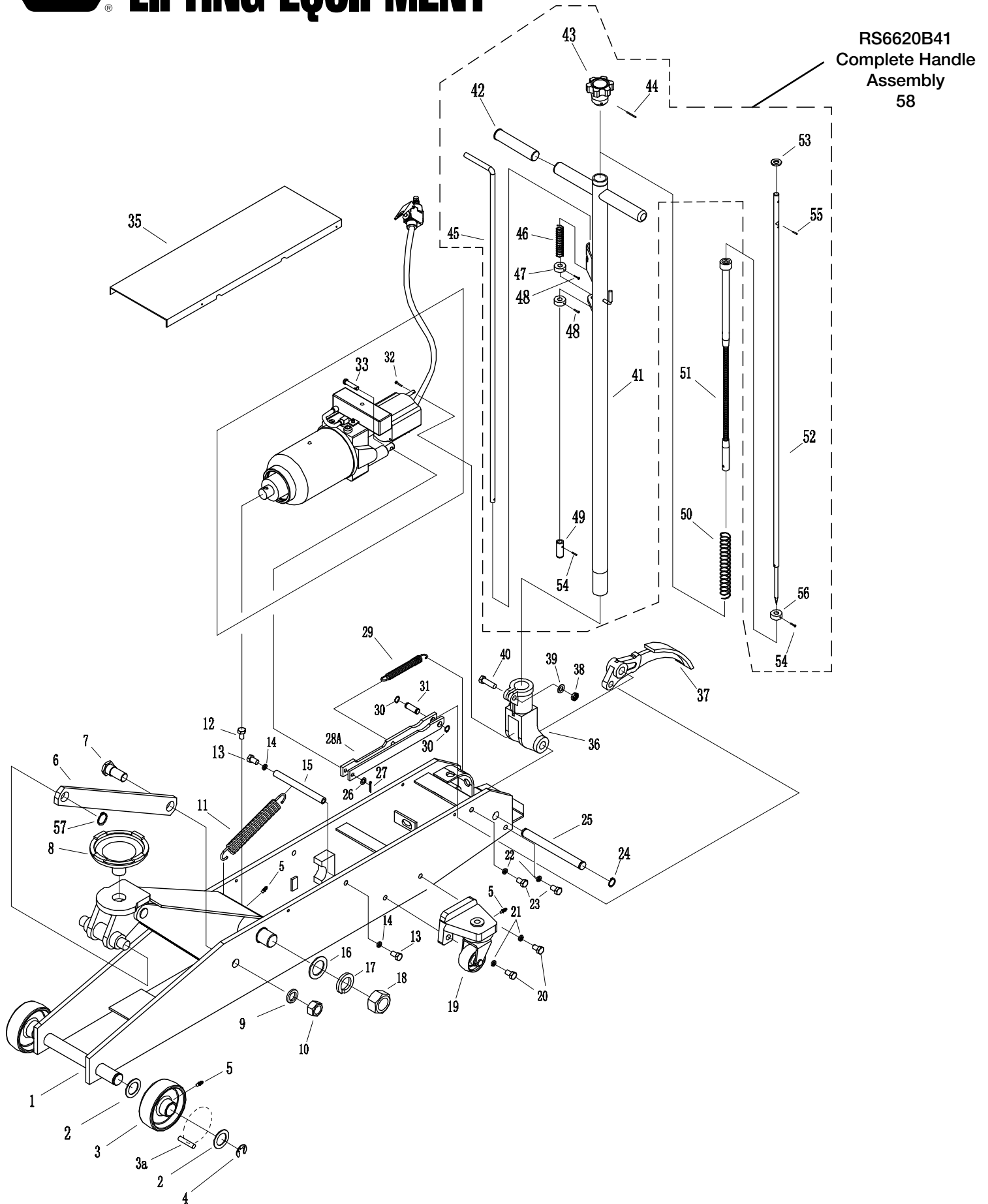
## WARRANTY

Please contact your local NAPA Auto Parts Store for details on warranty.



# PROFESSIONAL LIFTING EQUIPMENT

**MODEL # 791-6620 D**  
**10 TON AIR/HYDRAULIC**  
**SERVICE JACK**

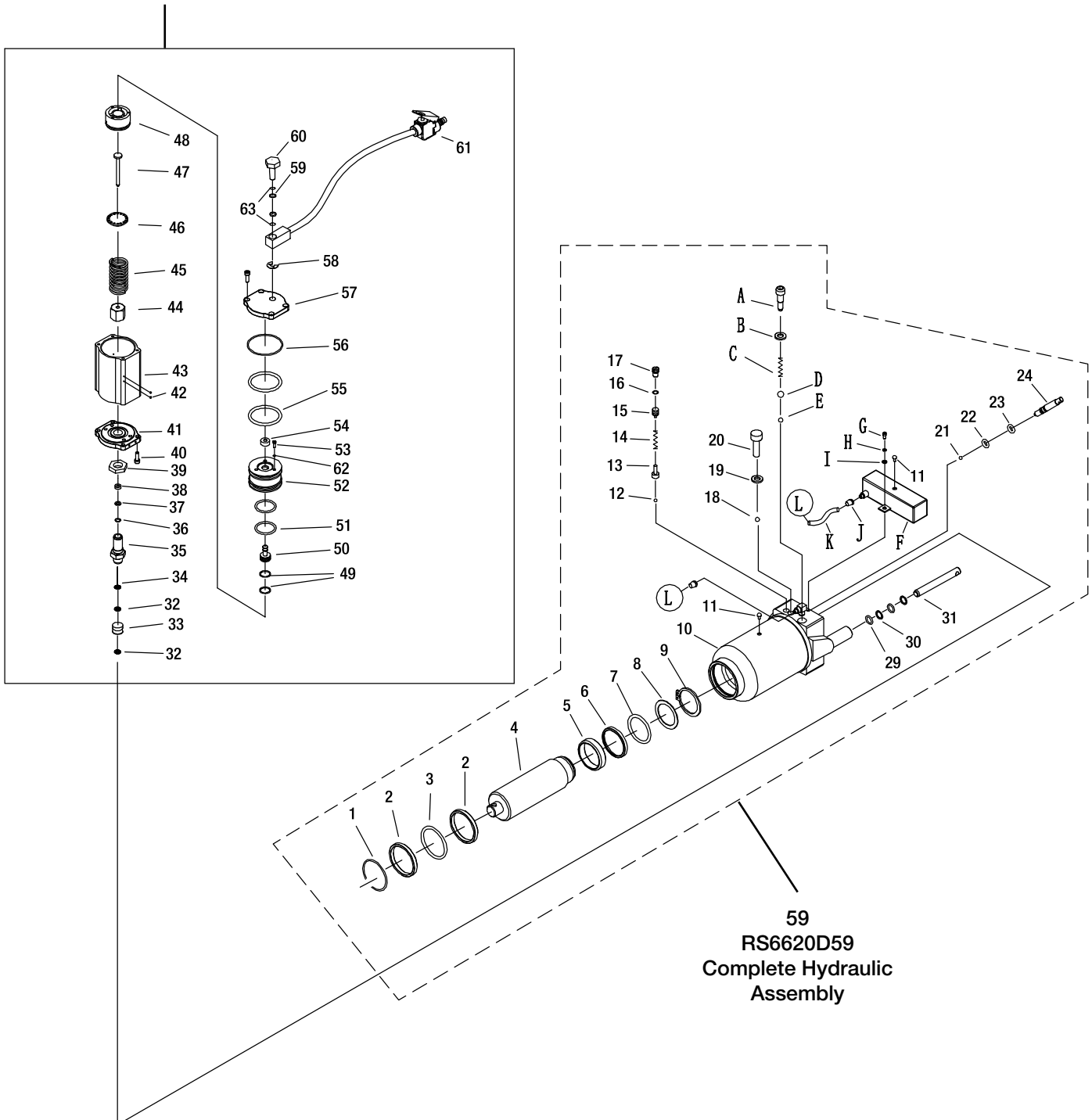




# PROFESSIONAL LIFTING EQUIPMENT

**MODEL # 791-6620 D**  
**10 TON AIR/HYDRAULIC**  
**SERVICE JACK**

RS6620DA  
Air Motor  
Assembly  
64





# PROFESSIONAL LIFTING EQUIPMENT

## MODEL # 791-6620 D 10 TON AIR/HYDRAULIC SERVICE JACK

Index No.	Part No.	Description	Qty.	Index No.	Part No.	Description	Qty.
1		Frame	1	31	RS550509	Pedal Pin	1
2		Washer	4	32		Pin Revision D	1
3	RS660903BL	Front Wheel (incl. #2, 3, 3-1, 4,5)	2	33		Pin	1
3-1	RS660903A	Roller Bearing Set	2	35		Cover Board	1
4		Snap Ring	2	36	RS660932BL	Handle Socket	1
5		Grease Fitting	5	37	RS550511BL	Pedal	1
6		Rod Link	2	38		Nut	1
7		Bolt	2	39		Washer	1
8	RS660908Y	Saddle	1	40	RS550535	Bolt Kit (Incl. 38, 39, 40)	1
9		Lock Washer	2	41		Handle	1
10		Nut	2	42		Sleeve	2
11		Spring	1	43	RS660939Y	Knob (incl. 43, 44)	1
12		Bolt	1	44		Pin	1
13		Bolt	2	45		Control Rod	1
14		Snap Ring	2	46		Spring	1
15		Shaft	1	47		Washer	2
16		Washer	2	48		Screw	2
17		Ring	2	49		Rod Joint	1
18		Nut	2	50		Spring	1
19	RS660916BL	Rear Wheel Assembly	2	51	RS6614A51	Release Assembly Revision D	1
20	RS660917	Caster Bolt Kit Assembly - incl. #20 (2), 21 (2)	2	52		Convey Rod	1
21		Washer	4	53		Washer	1
22		Washer	4	54		Pin	2
23		Bolt	4	55		Pin	1
24		Snap Ring	2	56		Washer	1
25		Shaft	1	57		Ring	2
26		Washer	1	58	RS6620B41	Complete Handle Assembly (incl. 41-49, 52-56)	1
27		Pin	1	59	RS6620D59	Complete Hydraulic Assembly Revision D	1
28A		Link Assy.	1		RS6620DLK	Product Label Kit (not shown) Revision D	1
29	RS660929	Spring	1				
30	RS550510	Snap Ring -12 mm Diameter	2				

### PARTS LIST FOR HYDRAULIC UNIT: RS6620D59

Index No.	Part No.	Description	Qty.	Index No.	Part No.	Description	Qty.
1	*	Snap ring	1	20		Bolt	1
2	*	Washer	2	21	*	Steel ball	1
3	*	O-ring	1	22	*	O-ring	1
4		Piston Rod	1	23	*	O-ring	1
5	*	Piston ring	1	24	RS6620D24	Release valve Rod Revision D	1
6	*	Sealing washer	1	29	*	O-ring	2
7	*	O-ring	1	30	*	Washer	2
8	*	O-ring Retainer	1	31		Cylinder Pump Plunger	1
9	*	Snap ring	1	A		Screw	1
10		Oil cylinder assembly	1	B	*	Copper washer	1
11	*	Oil Filler Plug	2	C	*	Spring	1
12	*	Steel ball	1	D	*	Steel Ball 9	1
13	*	Ball seat	1	E	*	Steel Ball 6	1
14	*	Spring	1	F		Oil box	1
15		Screw	1	G		Screw	1
16	*	Sealing washer	1	H	*	Washer	1
17		Bolt	1	I	*	Washer	1
18	*	Steel ball	1	J		Nut	2
19	*	Copper washer	1	K	RS6614AK	Hose (incl. J, K (2))	1

### PARTS LIST FOR AIR MOTOR: RS6620DA

Index No.	Part No.	Description	Qty.	Index No.	Part No.	Description	Qty.
32	**	Copper washer	2	49	**	O-ring	2
33	RS6620BA33	Oil valve assembly	1	50		Air Release Rod	1
34	**	Nylon Gasket	1	51	**	O-ring	2
35		Pump cylinder	1	52		Piston Body "B"	1
36	**	Oil seat	1	53		Bolt	3
37	**	Nylon Gasket	1	54		Air Seal Revision D	1
38	**	Copper washer	1	55	**	O-ring	2
39		Nut	1	56	**	O-ring	1
40		Bolt	8	57		Rear cover	1
41		Front cover	1	58		pin	1
42	**	Steel Ball 3	4	59	**	O-ring	2
43		Air Pump Housing	1	60		screw	1
44		Nut	1	61	RS6620B61	Air valve (excluding hose)	1
45		Spring	1	62		O-ring	3
46		Washer	1	63	**	Nylon washer	2
47		Cylinder Pump Plunger	1	64	RS6620DA	Air Motor Assembly Revision D	1
48		Piston Body "A"	1	65	RS6620B65	Hose	1

Only index numbers identified by Part Number are available separately. \* Only available in hydraulic repair kit RS6620DHRK. \*\* Only available in air motor repair kit RS6620DARK.