



# QFJ06D 3 TON QUICK LIFT JACK (DOUBLE PUMP)

**Address:** 200 Cabel St. Louisville, KY 40206.

**Sales and Service:** 1-877-771-5438.

**Fax:** 502-583-5488.

**Website:** www.qualitylifts.com

### SPECIFICATIONS

Capacity: .....	3 Tons
Low Height: .....	4-7/8"
Raised Height: .....	21"
Length: .....	28.94"
Chassis Width: .....	14.49"
Handle Length (2 piece): .....	50"
Saddle Diameter: .....	5"
Wheel Diameter Front: .....	3.5"
Wheel Diameter Rear .....	2.36"
Shipping Weight: .....	103.6 lbs

### FEATURES

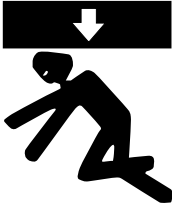
- Heavy gauge flanged steel frame
- Heavy duty black steel swivel casters and 2-1/4" wide-track front wheels
- Round cast steel saddle
- Dual piston power unit for rapid lifting
- Dual return spring
- Safety overload system prevents use beyond rated capacity

### OWNER/USER RESPONSIBILITY

The owner and/or user must have a thorough understanding of the manufacturer's operating instructions and warnings before using this service jack. Personnel involved in the use and operation of equipment shall be careful, competent, trained, and qualified in the safe operation of the equipment and its proper use when servicing motor vehicles and their components. Warning information should be emphasized and understood. If the operator is not fluent in English, the manufacturer's instructions and warnings shall be read to and discussed with the operator in the operator's native language by the purchaser/owner, making sure that the operator comprehends its contents. Owner and/or user must study and maintain for future reference the manufacturer's instructions. Owner and/or user is responsible for keeping all warning labels and instruction manuals legible and intact. Replacement labels and literature are available from the manufacturer.



**! WARNING**



**USE ONLY ON HARD LEVEL SURFACES.**  
**DO NOT GET UNDER A VEHICLE THAT IS ONLY SUPPORTED BY A TROLLEY/SERVICE JACK—USE VEHICLE SUPPORT STANDS.**  
**THIS IS A LIFTING DEVICE ONLY. DO NOT MOVE OR DOLLY THE VEHICLE WHILE ON THE JACK. IMMEDIATELY AFTER LIFTING, SUPPORT THE VEHICLE WITH APPROPRIATE MEANS.**  
**DO NOT OVERLOAD. OVERLOADING CAN CAUSE DAMAGE TO OR FAILURE OF THE JACK.**  
**LIFT ONLY ON AREAS OF THE VEHICLE AS SPECIFIED BY THE VEHICLE MANUFACTURER.**  
**CENTER LOAD ON SADDLE PRIOR TO LIFTING.**  
**NO ALTERATIONS TO THE JACK SHALL BE MADE.**  
**READ, STUDY AND UNDERSTAND THE OPERATING MANUAL PACKED WITH THIS JACK BEFORE OPERATING.**  
**FAILURE TO HEED THESE WARNINGS MAY RESULT IN LOSS OF LOAD, DAMAGE TO JACK, AND/OR FAILURE RESULTING IN PROPERTY DAMAGE, PERSONAL OR FATAL INJURY.**

**! WARNING**

**For Your Safety and to Prevent Injury:**  
**ALWAYS Support Vehicle with Appropriately Rated Support Stands!**



**Use Service Jack for Lifting Purposes ONLY!**

## **INSPECTION**

Visual inspection should be made before each use of the service jack, checking for leaking hydraulic fluid and damaged, loose or missing parts. Each jack must be inspected by a manufacturer's repair facility immediately, if accidentally subjected to an abnormal load or shock. Any jack which appears to be damaged in any way, found to be badly worn, or operates abnormally **MUST BE REMOVED FROM SERVICE** until necessary repairs are made by a manufacturer's authorized repair facility. It is recommended that an annual inspection of the jack be made by a manufacturer's authorized repair facility and that any defective parts, decals or warning labels be replaced with manufacturer's specified parts.

A list of authorized repair facilities is available from the manufacturer.

## **OPERATING INSTRUCTIONS**

**IMPORTANT:** Before attempting to raise a vehicle, check vehicle service manual for recommended lifting surfaces.

1. **To raise load:** Close release valve tightly (by turning handle knob clockwise). **DO NOT OVERTIGHTEN.** Position jack under load so that saddle will contact load firmly and load is centered so it cannot slip. Operate the air valve until saddle approaches the load. Once again check to see that saddle is correctly positioned. Raise load to desired height. Place jack stands of appropriate capacity under the vehicle. **DO NOT CRAWL UNDER VEHICLE WHILE LIFTING VEHICLE OR PLACING OR REMOVING JACK STANDS!** Place jack stands at vehicle manufacturer's recommended lift areas that provide stable support for the raised vehicle.
2. **To lower load:** Open release valve **VERY SLOWLY** (by turning handle knob counterclockwise). When release valve is opened, saddle and load will be lowered. Lower the vehicle slowly so as not to shock load the jack stands. Once repairs are completed, raise vehicle enough to remove jack stands. Lower vehicle very slowly.

**CAUTION:** Keep hands or feet away from the hinge mechanism of the jack.

## **MAINTENANCE INSTRUCTIONS**

**IMPORTANT!** When adding or replacing hydraulic fluid, always use a quality hydraulic fluid. **DO NOT** use brake fluid, alcohol, glycerine, detergent motor oil, or dirty oil as improper fluid can cause serious internal damage to jack.

**To add hydraulic fluid:** With saddle fully lowered and jack on level ground, remove oil filler screw. The hydraulic fluid should just cover the surface of the internal cylinder visible through the hole. Do not overfill. Replace oil filler screw. If low, add hydraulic fluid as needed. Maintenance and Inspection: The owner and/or user must maintain and inspect the jack in accordance with the manufacturer's instructions.

## **LUBRICATION**

All moving joints require lubrication on a regular maintenance schedule. Remove handle and grease the lower end of handle where it rotates in the handle socket. Using a grease gun, lubricate the lift arm pivot shaft grease fitting until grease appears at the end of the shaft. Grease all lift arm linkages, front wheels and rear casters.

## **PROPER STORAGE**

It is recommended that this jack be stored in a dry location with all wheels touching the ground on a relatively level surface.

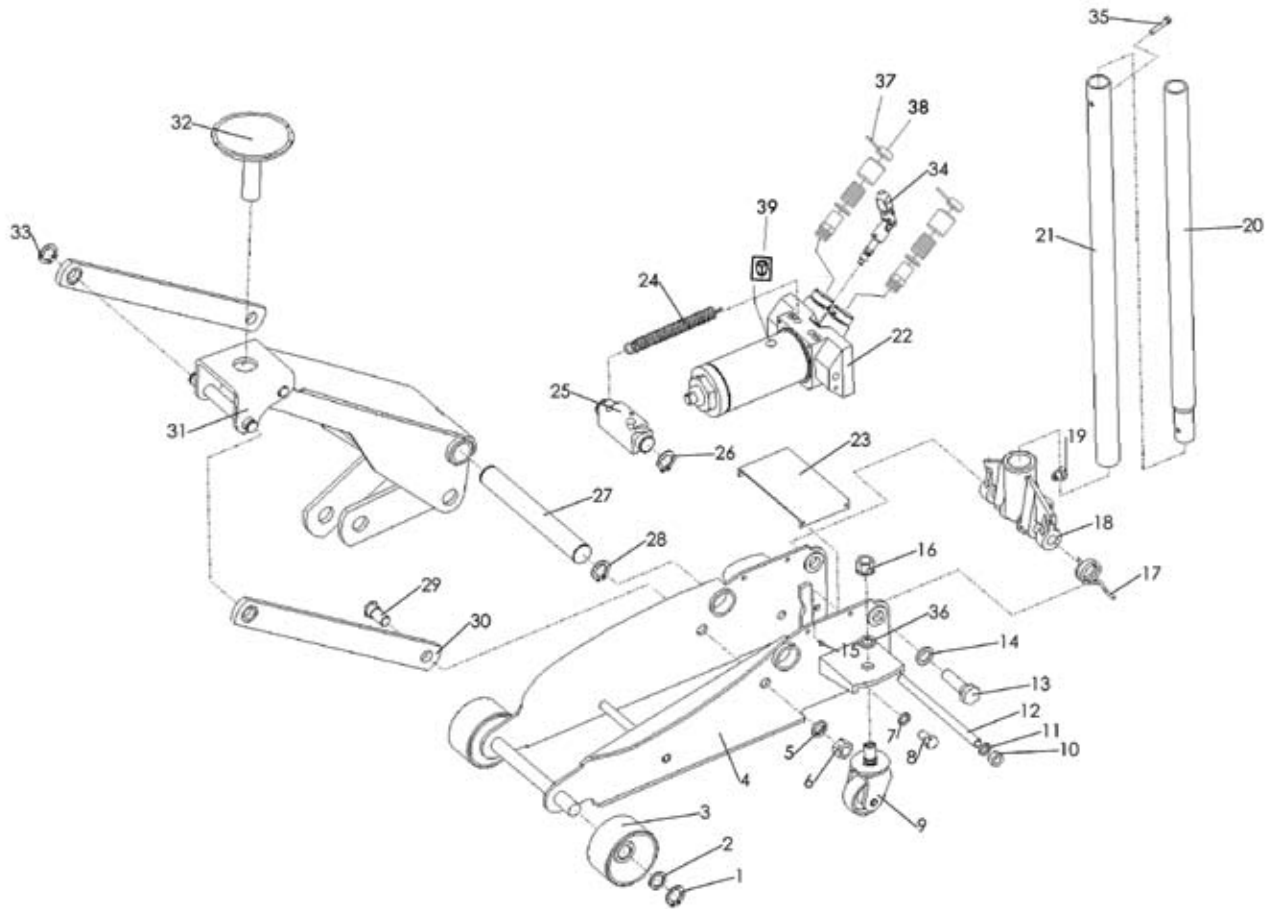
## **TROUBLESHOOTING**

**Important:** Service jacks are self-contained devices used for lifting, but not sustaining, a partial vehicular load. In accordance with ASME-PALD standard, section 10-4.1.2 Load Sustaining Test: "A load not less than the rated capacity... shall not lower more than 1/8" (3.18mm) in the first minute, nor a total of .1875" (4.76mm) in 10 minutes." Leak down within this range is considered normal operation and is **NOT** a warrantable defect.

## **TROUBLESHOOTING**

<b>PROBLEM</b>	<b>SOLUTION</b>
Jack will not lift load.	The release valve is not closed. Turn the valve clockwise tightly.
Jack will not lift load. Jack will not lift to its full height	Low on hydraulic fluid. Refill the jack to the correct level of hydraulic fluid.
Jack will not lift load.	Pump seals and back-up ring are defective. Clean hydraulic fluid passages, replace seals and renew hydraulic fluid. (Must be serviced by qualified service center).
Jack will not lift to its full height. Jack will not lift smoothly or jack feels spongy.	The hydraulic system is filled with air. Open the release valve, pump handle rapidly (4) full strokes to purge air, close release valve.
Jack will not lower completely.	Return spring is broken or linkages binding. Replace spring if broken. Grease pivot shaft, oil all lift arm linkages.
Jack will not hold load or handle rises.	Discharge ball is not sealing hydraulic system and oil may be dirty. Manually flush hydraulic system by raising and lowering lift arm by hand. Open the release valve, as required to raise and lower the lift arm. Manually raise and lower lift arm.

# QFJ06D 3 TON QUICK LIFT JACK (DOUBLE PUMP)



Item No.	Part No.	Description	Qty.	Item No.	Part No.	Description	Qty.
1	RS3501	Retaining Ring	2	21	RSQF21	Lower Handle	1
2	RS35011	Washer	2	22	RSQF22	Power Unit Assembly	1
3	RSQF03	Wheel	2		RSQF22SK	Repair Kit for Power Unit	
4		Side Plate Assembly	1	23		Inspection Plate	1
5		Spring Washer 16	2	24	RSSJ322	Spring	2
6		Hex Nut M16	2	25	RS3510ABL5	Block Linkage	1
7		Spring Washer 12	2	26		Retaining Ring 25	2
8		Hex Bolt M12 x 20	2	27		Shaft Arm	1
9	RSQF09	Caster Assembly	2	28		Retaining Ring	2
10		Hex Nut M10	2	29		Bolt	2
11		Spring Washer 10	2	30		Long Linkage	2
12		Pull Rod	1	31		Life Arm Assembly	1
13		Bolt	2	32	RSQF32	Saddle	1
14		Spring Washer 18	2	33		Retaining Ring	2
15		Screws	4	34	RS3530BL5	Release Assembly	1
16	RSQF16	Hex Nut M16	2	35	RS3534	Hex Bolt M6x35	1
17	RSQF17	Torsion Spring	1	36		Spring Washer 16	2
18	RSQF18BL5	Handle Socket	1	37	RS35241	Cap for pump plunger	2
19	RS3526	Bolt	1	38	RS35242	Pin for pump plunger cap	2
20	RSQF20	Upper Handle	1	39	RSQF39	Oil Fill Screw	1

Only items identified by part number are available for purchase.

## **LIMITED WARRANTY:**

QUALITY LIFTS WARRANTS TO ITS CUSTOMERS THAT THE COMPANY'S HYDRAULIC JACKS ARE FREE FROM DEFECTS IN WORKMANSHIP AND MATERIALS.

Quality Lifts will repair or replace its hydraulic jacks which fail to give satisfactory service due to defective workmanship or materials, based upon the terms and conditions of the following described warranty plans attributed to that specific product.

This product carries a ONE-YEAR limited warranty. During this warranty period, Quality Lifts will repair or replace at our option any part or unit which proves to be defective in material or workmanship.

This warranty does not cover damage and normal wear and tear to consumable parts. This warranty does not cover any repairs or replacement made by anyone other than Quality Lifts or its authorized hydraulic service centers.

The foregoing obligation is Quality Lifts sole liability under this or any implied warranty and under no circumstances shall we be liable for any incidental or consequential damages.

Note: Some states do not allow the exclusion or limitation of incidental or consequential damages, so the above limitation or exclusion may not apply to you. To determine if your product issue is covered by warranty, please call Quality Lifts sales and service number. If a repair or replacement part is needed, a RMA # will be issued.

Return equipment or parts to any Quality Lifts authorized service center, transportation prepaid. Be certain to include your name and address, evidence of the purchase date, Quality Lifts RMA# and description of the suspected defect.

If you have any questions about warranty service, please write to Quality Lifts. This warranty gives you specific legal rights and you may also have other rights which vary from state to state.

Repair kits and replacement parts are available for purchase from authorized hydraulic service centers if product is no longer covered by a warranty plan.

**Address:** 200 Cabel St. Louisville, KY 40206. **Sales and Service:** 1-877-771-5438. **Fax:** 502-583-5488. **Website:** [www.qualitylifts.com](http://www.qualitylifts.com)