

Operating Instructions • Warning Information • Parts Breakdown



! WARNING

Some dust created by power sanding, sawing, grinding, drilling, and other construction activities contains chemicals known to cause cancer, birth defects or other reproductive harm. Some examples of these chemicals are:

- lead from lead-based paints,
- crystalline silica from bricks and cement and other masonry products, and
- arsenic and chromium from chemically-treated lumber.

Your risk from these exposures varies, depending on how often you do this type of work. To reduce your exposure to these chemicals: work in a well ventilated area, and work with approved safety equipment, such as those dust masks that are specially designed to filter out microscopic particles.

! WARNING



ALWAYS READ INSTRUCTIONS BEFORE USING POWER TOOLS



ALWAYS WEAR SAFETY GOGGLES



WEAR HEARING PROTECTION



AVOID PROLONGED EXPOSURE TO VIBRATION

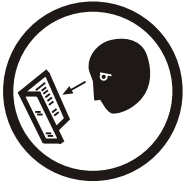
SPECIFICATIONS

Max. Free Speed	200 RPM	Air Consumption.....	4 CFM
Torque.....	60 ft.lbs.	Sound Level.....	88 dBA
Air Inlet.....	1/4 NPT	Length	11.02"
Hose Size	3/8" I.D.	Shipping Wt.	2.7 Lbs.
Air Pressure	90 PSI		

SX114
3/8" DR.
SUPER DUTY
AIR RATCHET
WRENCH

!WARNING

FAILURE TO OBSERVE THESE WARNINGS COULD RESULT IN INJURY.



This Instruction Manual Contains Important Safety Information.

READ THIS INSTRUCTION MANUAL CAREFULLY AND UNDERSTAND ALL INFORMATION BEFORE OPERATING THIS TOOL.



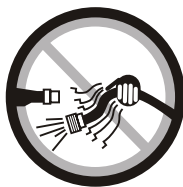
- Always operate, inspect and maintain this tool in accordance with American National Standards Institute Safety Code of Portable Air Tools (ANSI B186.1) and any other applicable safety codes and regulations.
- For safety, top performance and maximum durability of parts, operate this tool at 90 psig/6.2 bar max air pressure with 3/8" diameter air supply hose.



- Always wear impact-resistant eye and face protection when operating or performing maintenance on this tool. Always wear hearing protection when using this tool.



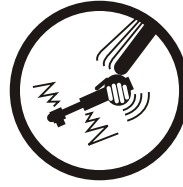
- High sound levels can cause permanent hearing loss. Use hearing protection as recommended by your employer or OSHA regulation.



- Keep the tool in efficient operating condition.
- Operators and maintenance personnel must be physically able to handle the bulk, weight and power of this tool.
- Air under pressure can cause severe injury. Never direct air at yourself or others. Always turn off the air supply, drain hose of air pressure and detach tool from air supply before installing, removing or adjusting any accessory on this tool, or before performing any maintenance on this tool. Failure to do so could result in injury. Whip hoses can cause serious injury. Always check for damaged, frayed or loose hoses and fittings, and replace immediately. Do not use quick detach couplings at tool. See instructions for correct set-up.



- Air powered tools can vibrate in use. Vibration, repetitive motions or uncomfortable positions over extended periods of time may be harmful to your



hands and arms. Discontinue use of tool if discomfort, tingling feeling or pain occurs. Seek medical advice before resuming use.



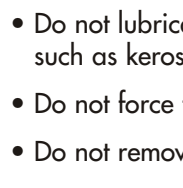
- Place the tool on the work before starting the tool. Do not point or indulge in any horseplay with this tool.
- Slipping, tripping and/or falling while operating air tools can be a major cause of serious injury or death. Be aware of excess hose left on the walking or work surface.



- Keep body working stance balanced and firm. Do not overreach when operating the tool.

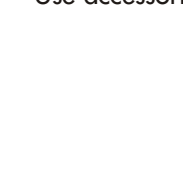


- Anticipate and be alert for sudden changes in motion during start up and operation of any power tool.



- Do not carry tool by the hose. Protect the hose from sharp objects and heat.

- Tool shaft may continue to rotate briefly after throttle is released. Avoid direct contact with accessories during and after use. Gloves will reduce the risk of cuts or burns.

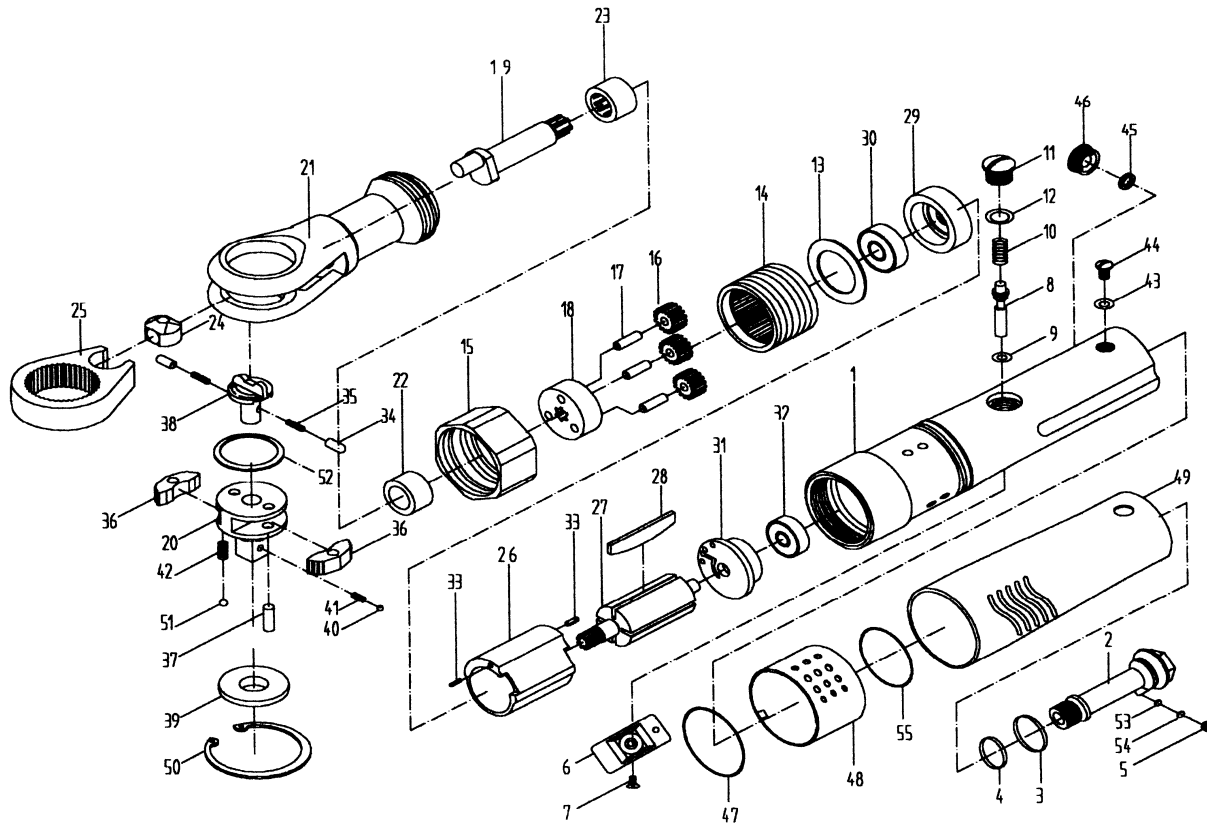


- Keep away from rotating end of tool. Do not wear jewelry or loose clothing. Scalping can occur if hair is not kept away from tool and accessories. Choking can occur if neckwear is not kept away from tool and accessories.

- Do not lubricate tools with flammable or volatile liquids such as kerosene, diesel or jet fuel.
- Do not force tool beyond its rated capacity.
- Do not remove any labels. Replace any damaged labels.
- Use accessories recommended by Sunex Tools.

SX114

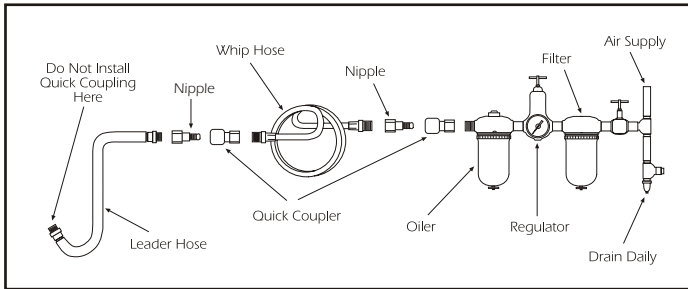
3/8" Dr. Super Duty Air Ratchet Wrench



Ref. #	Item #	DESCRIPTION	QTY	Ref. #	Item#	DESCRIPTION	QTY
1	RS11401	Housing	1	29	RS11429	Front End Plate	1
2	RS11402	Inlet Collar	1	30	RS729478	Ball Bearing	1
3	RS11403	O-Ring	1	31	RS11431	Rear Cover	1
4	RS11404	O-Ring	1	32	RS227B25	Ball Bearing	1
5	RS11405	Oil Inlet Collar	1	33	RS11433	Spring Pin	2
6	RS11406	Trigger	1	*34		Sleeve	2
7	RS11407	Screw	1	*35		Spring	2
8	RS11408	Valve Bushing	1	*36		Ratchet Pawl	2
9	RS11409	O-Ring	1	*37		Set Pin	2
10	RS11410	Spring	1	*38		Reverse Button	1
11	RS11411	Valve Plug	1	*39		Thrust Washer	1
12	RS11412	O-Ring	1	*40		Steel Ball	1
13	RS11413	Washer	1	*41		Spring	1
14	RS11414	Gear Ring	1	*42		Spring Pin	2
15	RS11415	Clamp Nut	1	43	RS11443	O-Ring	1
16	RS11416	Planet Gear	3	44	RS11444	Screw	1
17		Gear Pin (included in #18)	3	45	RS11445	O-Ring	1
18	RS11418	Gear Plate with Pins	1	46	RS11446	Oil Window	1
19	RS11419	Crank Shaft	1	47	RS11447	O-Ring	1
*20		Anvil Cage	1	48	RS11448	Exhaust Ring	1
21	RS11421	Ratchet Housing	1	49	RS11449	Rubber Grip	1
22	RS11422	Spacer	1	*50		Retainer Ring	1
23	RS11423	Needle Bearing	1	*51		Steel Ball	2
24	RS11424	Drive Bushing	1	*52		Washer	1
25	RS11425	Ratchet Yoke	1	53	RS11453	Oil Cotton	1
26	RS11426	Cylinder	1	54	RS11454	Brass Spacer	1
27	RS11427	Rotor	1	55	RS11455	O-Ring	1
28	RS11428	Rotor Blade	4				

*Available only in head kit, Part #RSRHK114
 Only items identified by part # are available individually.

Operating Instructions • Warning Information • Parts Breakdown



Air Supply...

Tools of this class operate on a wide range of air pressures. It is recommended that air pressure of these tools measures 90 PSI at the tool while running free. Higher pressure (over 90 psig; 6.2 bar) raises performance beyond the rated capacity of the tool which will shorten tool life because of faster wear and could cause injury.

Always use clean, dry air. Dust, corrosive fumes and/or water in the air line will cause damage to the tool. Drain the air tank daily. Clean the air inlet filter screen on at least a weekly schedule. The recommended hookup procedure can be viewed in the above figure.

The air inlet used for connecting air supply, has standard 1/4" NPT. Line pressure should be increased to compensate for unusually long air hoses (over 25 feet). Minimum hose diameter should be 3/8" I.D. and fittings should have the same inside dimensions and be tightly secured.

Lubrication...

This tool comes equipped with an automatic oiler. Before initial use, remove screw with o-ring (44,43) on the side opposite the trigger and pour clean air tool oil into reservoir until the oil level covers entire oil level glass (47). Replace screw with o-ring and tighten securely. Do not over tighten as the o-ring could be damaged. Oil will be circulated through trigger and air motor each time the trigger is depressed. Check oil level in oil level glass on at least a weekly schedule for long tool life.

Limited Warranty...

SUNEX INTERNATIONAL, INC. WARRANTS TO ITS CUSTOMERS THAT THE COMPANY'S SUNEX TOOLS® BRANDED PRODUCTS ARE FREE FROM DEFECTS IN WORKMANSHIP AND MATERIALS.

Sunex International, Inc. will repair or replace its Sunex Tools® branded products which fail to give satisfactory service due to defective workmanship or materials, based upon the terms and conditions of the following described warranty plans attributed to that specific product. This product carries a ONE-YEAR warranty. During this warranty period, Sunex Tools will repair or replace at our option any part or unit which proves to be defective in material or workmanship.

Other important warranty information...

This warranty does not cover damage to equipment or tools arising from alteration, abuse, misuse, damage and does not cover any repairs or replacement made by anyone other than Sunex Tools or its authorized warranty service centers. The foregoing obligation is Sunex Tools' sole liability under this or any implied warranty and under no circumstances shall we be liable for any incidental or consequential damages.

Note: Some states do not allow the exclusion or limitation of incidental or consequential damages, so the above limitation or exclusion may not apply to you. Return equipment or parts to Sunex Tools, or an authorized warranty service center, transportation prepaid. Be certain to include your name and address, evidence of the purchase date, and description of the suspected defect.

If you have any questions about warranty service, please write to Sunex Tools. This warranty gives you specific legal rights and you may also have other rights which vary from state to state. Repair kits and replacement parts are available for many of Sunex Tools products regardless of whether or not the product is still covered by a warranty plan.

Shipping Address: Sunex Tools • 315 Hawkins Rd. • Travelers Rest, SC 29690

Mailing Address: Sunex Tools • P.O. Box 4215 • Greenville, SC 29608

Operation...

This ratchet wrench is rated at 3/8" USS bolt size. Rating must be down graded for spring U bolts, tie bolts, long cap screws, double depth nuts, badly rusted conditions and spring fasteners as they absorb much of the impact power. When possible, clamp or wedge the bolt to prevent springback.

NOTE: Actual torque on a fastener is directly related to joint hardness, tool speed, condition of socket and the time the tool is allowed to impact.

Use the simplest possible tool-to-socket hook up. Every connection absorbs energy and reduces power.

NOTE: Soak rusted nuts in penetrating oil and break rust seal before removing with ratchet wrench. If nut does not start to move in three to five seconds, use a larger size ratchet wrench. Do not use ratchet wrench beyond rated capacity as this will drastically reduce tool life.

This tool is equipped with a variable speed trigger to deliver precise speed control. The further the trigger is depressed, the more RPM's are delivered. You may also adjust the exhaust away from you by simply turning the fully adjustable exhaust ring (48).

The forward/reverse button (38) is located on the ratchet housing (21) opposite anvil cage (20). Turn the button clockwise for reverse and counterclockwise for forward.