

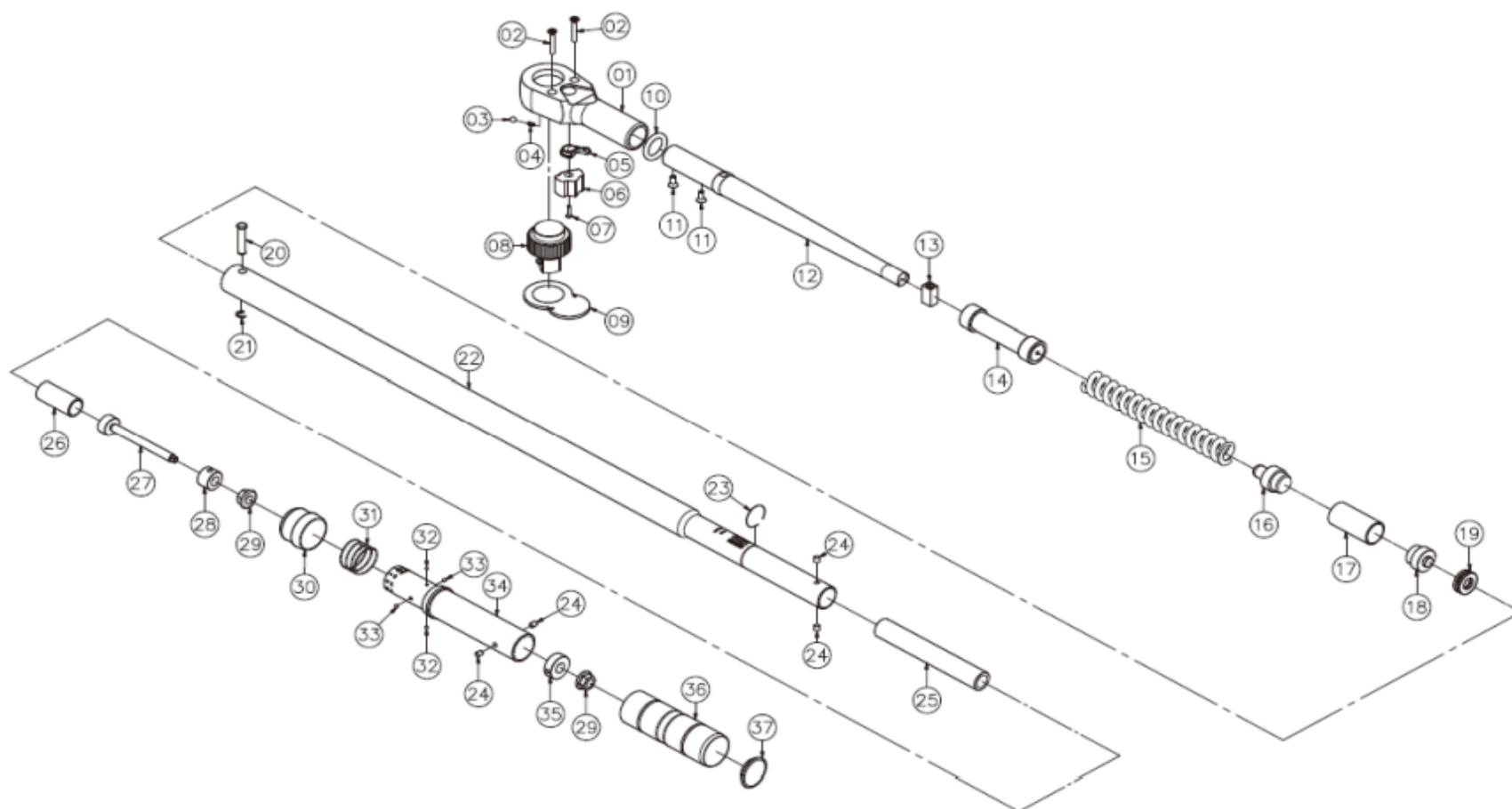
## 40600

40600RK1 – RS36609

40600RK2 – RS40600RK2

40600RK3 – RS40600RK3

40600RK4 – RS40600RK4



<b>40600RK1</b>	<ul style="list-style-type: none"> <li>2. Screw for steel cover *2</li> <li>3. Steel ball for pawl *1</li> <li>4. Spring for pawl *1</li> <li>5. Switch *1</li> <li>6. Pawl *1</li> <li>7. Screw for pawl *1</li> <li>8. Square drive *1</li> <li>9. Steel cover *1</li> </ul>
<b>40600RK2</b>	<ul style="list-style-type: none"> <li>10. O Ring *1</li> <li>11. Screw *2</li> <li>13. Jumping square *2</li> <li>14. Cam set *1</li> <li>15. Spring *1</li> <li>16. Spring base *1</li> <li>17. Extend tube *1</li> <li>18. Bearing shifting bar *1</li> <li>19. Bearing *1</li> </ul>

<b>40600RK3</b>	20. Pin *1 21. E Ring *1 22. Steel tube *1 23. C Ring *1 24. Pin *2 25. Spacer propping bar *1 26. Extend tube *1 27. Adjustable lever *1 28. Screw base *1 29. Hex screw nut *2
<b>40600RK4</b>	30. Ring-pull *1 31. Lock spring *1 32. 3.0mm Steel ball *2 33. 3.5mm Steel ball *2 34. Secondary scale tube *1 35. Adjustable lever base *1 36. Aluminum handle *1 37. Tail cover *1

