

Model 6635 is an air/hydraulic service jack in which the lift arm is actuated by a mechanism that utilizes a relatively incompressible fluid, such as oil, as the force transmitting means, actuated by a pneumatic power source.



!WARNING



USE ONLY ON HARD LEVEL SURFACES.

DO NOT GET UNDER A VEHICLE THAT IS ONLY SUPPORTED BY A TROLLEY/SERVICE JACK—USE VEHICLE SUPPORT STANDS.

THIS IS A LIFTING DEVICE ONLY. DO NOT MOVE OR DOLLY THE VEHICLE WHILE ON THE JACK. IMMEDIATELY AFTER LIFTING, SUPPORT THE VEHICLE WITH APPROPRIATE MEANS.

DO NOT OVERLOAD. OVERLOADING CAN CAUSE DAMAGE TO OR FAILURE OF THE JACK.

LIFT ONLY ON AREAS OF THE VEHICLE AS SPECIFIED BY THE VEHICLE MANUFACTURER.

CENTER LOAD ON SADDLE PRIOR TO LIFTING. OFF-CENTER LOADS MAY CAUSE DAMAGE TO JACK, LOSS OF LOAD, PROPERTY DAMAGE, PERSONAL OR FATAL INJURY.

NO ALTERATIONS TO THE JACK SHALL BE MADE.

READ, STUDY AND UNDERSTAND THE OPERATING MANUAL PACKED WITH THIS JACK BEFORE OPERATING.

FAILURE TO HEED THESE WARNINGS MAY RESULT IN LOSS OF LOAD, DAMAGE TO JACK, AND/OR FAILURE RESULTING IN PROPERTY DAMAGE, PERSONAL OR FATAL INJURY.

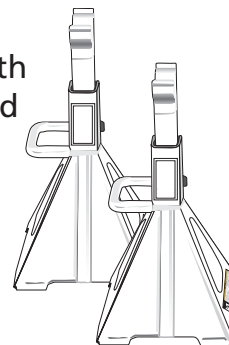
!WARNING

For Your Safety & to Prevent Injury:

ALWAYS

Support Vehicle with
Appropriately Rated
Support Stands!

Use Service Jack
for Lifting
Purposes ONLY!



6635 SPECIFICATIONS

Capacity 1st Ram	35 Tons
Capacity 2nd Ram	22 Tons
Min. Saddle Height	7 7/8"
Max. Saddle Height	14 3/8"
Power Lift	6-1/2"
Handle Length.	42 11/16"

OWNER/USER RESPONSIBILITY

The owner and/or user must have a thorough understanding of the manufacturer's operating instructions and warnings before using this service jack. Personnel involved in the use and operation of equipment shall be careful, competent, trained, and qualified in the safe operation of the equipment and its proper use when servicing motor vehicles and their components. Warning information should be emphasized and understood. If the operator is not fluent in English, the manufacturer's instructions and warnings shall be read to and discussed with the operator in the operator's native language by the purchaser/owner, making sure that the operator comprehends its contents.

Owner and/or user must study and maintain for future reference the manufacturer's instructions. Owner and/or user is responsible for keeping all warning labels and instruction manuals legible and intact.

Replacement labels and literature are available from the manufacturer.

FEATURES

- Chrome Plated Lift Ram
- Self-Retracting Ram Springs for Fast Ram Retraction
- Push Valve Lever for Fast Air Control
- 3 Position Lock Lever
- Safety Overload Valve
- Large Diameter Wheels for Ease of Operation

INSPECTION

Visual inspection should be made before each use of the service jack, checking for leaking hydraulic fluid and damaged, loose or missing parts. Each jack must be inspected by a manufacturer's repair facility immediately, if accidentally subjected to an abnormal load or shock. Any jack which appears to be damaged in any way, found to be badly worn, or operates abnormally **MUST BE REMOVED FROM SERVICE** until necessary repairs are made by a manufacturer's authorized repair facility. It is recommended that an annual inspection of the jack be made by a manufacturer's authorized repair facility and that any defective parts, decals or warning labels be replaced with manufacturer's specified parts.

A list of authorized repair facilities is available from the manufacturer.

OPERATING INSTRUCTIONS

IMPORTANT: Before attempting to raise a vehicle, check vehicle service manual for recommended lifting surfaces.

1. To raise load: Close release valve tightly (by turning handle knob clockwise). **DO NOT OVERTIGHTEN.** Position jack under load so that saddle will contact load firmly and load is centered so it cannot slip. Operate the air valve until saddle approaches the load. Once again check to see that saddle is correctly positioned. Raise load to desired height. Place jack stands of appropriate capacity under the vehicle. **DO NOT CRAWL UNDER VEHICLE WHILE LIFTING VEHICLE OR PLACING OR REMOVING JACK STANDS!** Place jack stands at vehicle manufacturer's recommended lift areas that provide stable support for the raised vehicle.
2. To lower load: Open release valve **VERY SLOWLY** (by turning handle knob counterclockwise). When release valve is opened, saddle and load will be lowered. Lower the vehicle slowly so as not to shock load the jack stands. Once repairs are completed, raise vehicle enough to remove jack stands. Lower vehicle very slowly.

CAUTION: Keep hands or feet away from the hinge mechanism of the jack.

MAINTENANCE INSTRUCTIONS

IMPORTANT! Use only a good grade hydraulic jack oil. Avoid mixing types of oil. Do not use brake fluid, alcohol, glycerin, detergent motor oil, or dirty oil. Improper fluid can cause serious internal damage to the jack, rendering it inoperative.

To Add Oil: With saddle fully lowered and ram depressed, set jack in an upright position and remove oil filler plug. Fill until oil is just below filler plug hole.

To Change Oil: For best performance and longest life, replace the entire oil supply at least once a year. To drain the oil, remove the filler plug. Lay the jack on its side and allow the oil to run out into suitable drain pan. The oil will run slowly because air must enter as oil drains out. Be careful to prevent dirt or foreign matter from entering the system. Replace with proper oil.

LUBRICATION

All moving joints require lubrication often. Remove handle and grease the lower end of handle where it connects to the release valve.

LIMITED WARRANTY:

SUNEX INTERNATIONAL, INC. WARRANTS TO ITS CUSTOMERS THAT THE COMPANY'S SUNEX TOOLS® BRANDED PRODUCTS ARE FREE FROM DEFECTS IN WORKMANSHIP AND MATERIALS.

Sunex International, Inc. will repair or replace its Sunex Tools® branded products which fail to give satisfactory service due to defective workmanship or materials, based upon the terms and conditions of the following described warranty plans attributed to that specific product.

This product carries a ONE-YEAR warranty. During this warranty period, Sunex Tools will repair or replace at our option any part or unit which proves to be defective in material or workmanship.

Other important warranty information...

This warranty does not cover damage to equipment or tools arising from alteration, abuse, misuse, damage and does not cover any repairs or replacement made by anyone other than Sunex Tools or its authorized warranty service centers.

The foregoing obligation is Sunex Tools' sole liability under this or any implied warranty and under no circumstances shall we be liable for any incidental or consequential damages.

Note: Some states do not allow the exclusion or limitation of incidental or consequential damages, so the above limitation or exclusion may not apply to you.

Return equipment or parts to Sunex Tools, transportation prepaid. Be certain to include your name and address, evidence of the purchase date, and description of the suspected defect.

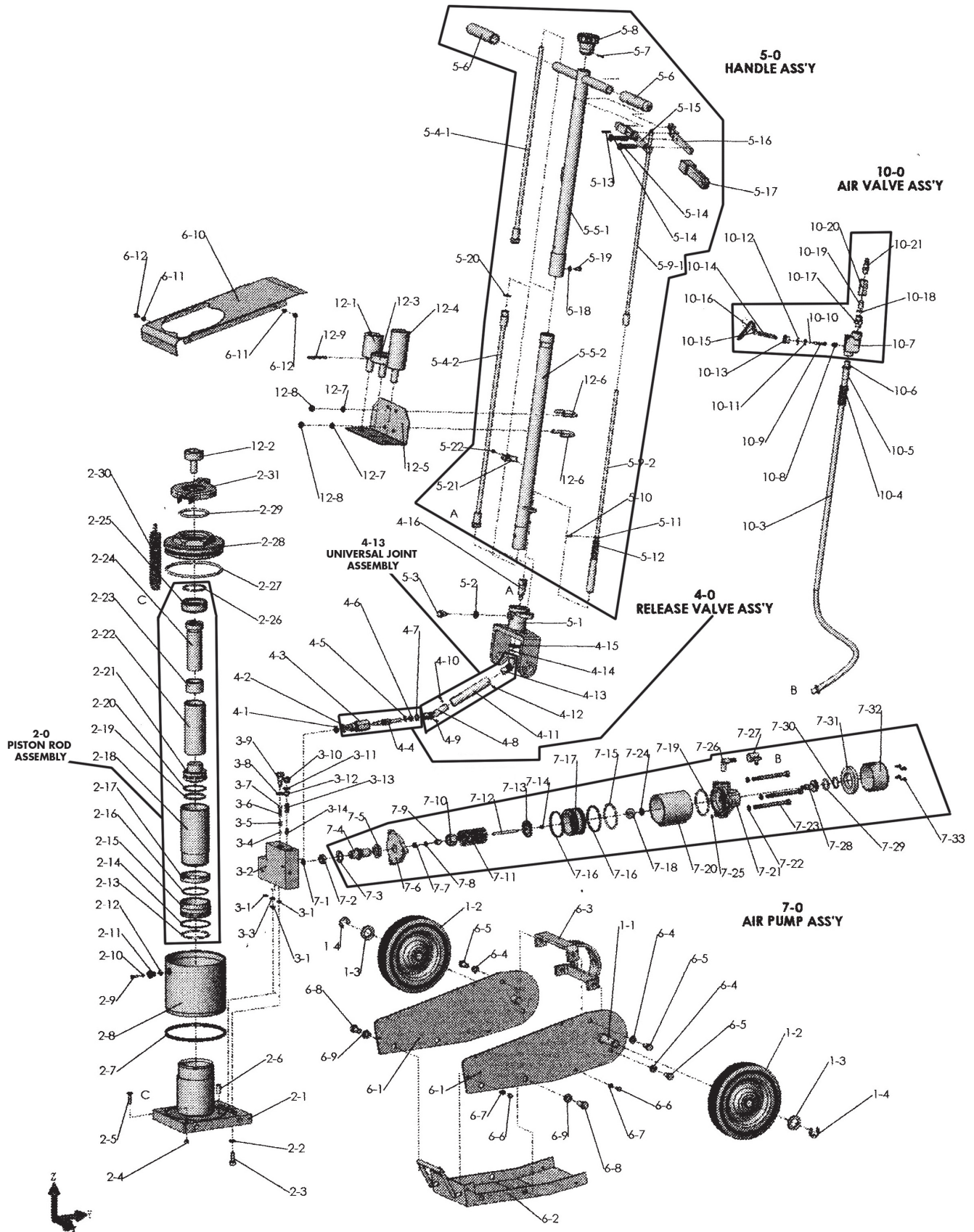
If you have any questions about warranty service, please write to Sunex Tools. This warranty gives you specific legal rights and you may also have other rights which vary from state to state.

Repair kits and replacement parts are available for many of Sunex Tools products regardless of whether or not the product is still covered by a warranty plan.

Shipping Address: Sunex Tools • 315 Hawkins Rd. • Travelers Rest, SC 29690

Mailing Address: Sunex Tools • P.O. Box 4215 • Greenville, SC 29608

MODEL 6635 - Operating Manual & Parts Breakdown



MODEL 6635 - Operating Manual & Parts Breakdown

REF. NO.	PART NO.	DESCRIPTION	QTY.
1.1		Wheel Shaft	1
1.2	RS662213	Wheel	1
1.3	RS662212	Washer	1
1.4	RS662214	Snap Ring	1
2.0	RS663520	Piston Rod Assembly (includes 2-13 through 2-26)	1
2.1	RS663521	Cylinder	1
2.2		Spring Washer	1
2.3		Bolt	1
2.4		Nut	1
2.5		Machine Screw	1
2.6	*	Oil Strainer	1
2.7	*	Cylinder Bottom Seal	1
2.8		Oil Tank	1
2.9		Breathing Screw	1
2.10	*	O-Ring 3.15x1.8	1
2.11	RS6635211	Oil Plug Assembly (includes 2-9, 2-10, 2-11, 2-12)	1
2.12	*	O-Ring 9.5x2.65	1
2.13	*	O-Ring 71x3.55	1
2.14	*	Seal Washer	1
2.15		Ram Header	1
2.16	*	Cylinder Bottom Seal	1
2.17		Retaining Ring	1
2.18		Cylinder	1
2.19	*	O-Ring 53x3.55	1
2.20	*	Seal Washer	1
2.21		Ram Header	1
2.22		Spring	1
2.23		Bush	1
2.24		Screw	1
2.25		Top Nut	1
2.26	*	O-Ring 53x3.55	1
2.27	*	O-Ring 140x5.3	1
2.28		Nut	1
2.29	*	O-Ring 69-5.3	1
2.30		Spring	1
2.31	RS6635231	Spring Hanger	1
3.1	*	O-Ring 11x1.9	1
3.2		Oil Box	1
3.3	*	Back-Up Ring	1
3.4	*	Steel Ball 6.5	1
3.5	*	Separator	1
3.6	*	Steel Ball 9.5	1
3.7	*	Spring	1
3.8	*	Copper Packing	1
3.9		Bolt	1
3.10		Bolt	1
3.11	*	Packing	1
3.12	*	Spring Retainer	1
3.13	*	Spring	1
3.14	*	Safety Valve	1

REF. NO.	PART NO.	DESCRIPTION	QTY.
4.0	RS663540	Release Valve Assembly (includes 4-3, 4-4, 4-5, 4-6, 4-7)	1
4.1		Packing	1
4.2	*	O-Ring 15.6x2.65	1
4.3		Guide	1
4.4		Valve	1
4.5	*	O-Ring 14x2.4	1
4.6	*	Washer	1
4.7		Snap Ring	1
4.8		Universal Joint	1
4.9		Spring Pin	1
4.10		Spring Pin	1
4.11		Connectin Rod	1
4.12		Spring Pin	1
4.13	RS6635413	Universal Joint Assembly (includes 4-8, 4-9, 4-10, 4-11, 4-12, 4-13)	1
4.14		Cotter Pin	1
4.15		Washer	1
4.16		Connecting Rod	1
5.0	RS663550	Handle Assembly	1
5.1	RS663551	Handle Fork	1
5.2		Spring Washer	1
5.3		Bolt	1
5.4.1		Connecting Rod	1
5.4.2		Connecting Rod	1
5.5.1		Up Handle	1
5.5.2		Lower Handle	1
5.6		Handle Cap	1
5.7		Spring Pin	1
5.8	RS662252	Knob	1
5.9.1	RS663559	Stopper (includes 5-9-1, 5-9-2, 5-10, 5-11, 5-12)	1
5.9.2		Stopper	1
5.10		Spring Pin	1
5.11		Washer	1
5.12		Spring	1
5.13		Spring Pin	1
5.14		Machine Screw	1
5.15		Lock Lever	1
5.16		Lock Lever	1
5.17		Handle Cap	1
5.18		Spring Washer 6	1
5.19		Bolt M6x10	1
5.20		Retaining Ring	1
5.21		Hose Collect	1
5.22		Machine Screw	1
6.1		Frame	1
6.2		Lower Cover	1
6.3		Handle Fork Bracket	1
6.4		Spring Washer 10	1
6.5		Bolt M10x20	1
6.6		Bolt M6x12	1

MODEL 6635 - Operating Manual & Parts Breakdown

REF. NO.	PART NO.	DESCRIPTION	QTY.
6.7		Spring Washer	1
6.8		Bolt M12x20	1
6.9		Spring Washer 12	1
6.10	RS6635610	Upper Cover	1
6.11		Lock Washer	1
6.12		Machine Screw	1
Z.0	RS663570	Air Pump Assembly	1
Z.1	*	Packing	1
Z.2		Thread Seal	1
Z.3		Cover	1
Z.4	RS663574	Pump Plunger Cover	1
Z.5		Adjusting Nut	1
Z.6		Cover	1
Z.7	*	"Y" Seal	1
Z.8	*	NL Retainer	1
Z.9	*	Packing Guide	1
Z.10		Nut	1
Z.11		Spring	1
Z.12		Plunger	1
Z.13		Block	1
Z.14		Nut MS	1
Z.15	*	O-Ring 63.5x3.55	1
Z.16	*	Square Ring	1
Z.17		Piston	1
Z.18	*	Seal	1
Z.19	*	O-Ring	1
Z.20		Air Pump Body	1
Z.21		Cover	1
Z.22		Spring Washer	1
Z.23		Hex Socket Screw	1
Z.24	*	Washer	1
Z.25	*	O-Ring	1
Z.26		Removeable Base	1
Z.27		Spiral Clamp	1
Z.28		Shuttle Valve	1
Z.29	*	O-Ring	1
Z.30	*	O-Ring	1
Z.31	*	Spinge	1
Z.32		Muffler	1
Z.33		Bolt	1
10.0	RS66221030	Air Valve Assembly	1
10.1		Pump Elbow	1
10.2		Hose Band	1
10.3	RS66221015	Air Hose	1
10.4		Spring	1
10.5		Hose Band	1
10.6		Hose Connector	1
10.7		Valve Body	1
10.8		Spring	1
10.9		Throttle	1
10.10		O-Ring 3x1.6	1
10.11		Packing	1
10.12		O-Ring 18x2.4	1
10.13		Nut	1

REF. NO.	PART NO.	DESCRIPTION	QTY.
10.14		Lock Lever	1
10.15		Lever Pin	1
10.16		Lever	1
10.17		Connector	1
10.18		O-Ring	1
10.19		Air Filter	1
10.20		Connecting Nut	
10.21		Connector	1
12.1	RS6622121	Adaptor-A	1
12.2	RS6622122	Adaptor-B	1
12.3	RS6622123	Adaptor-C	1
12.4	RS6622124	Adaptor-D	1
12.5	RS6622125	Holder Adaptor	1
12.6	+	U-Bolt	2
12.7	+	Spring Washer	4
12.8	+	Nut	4
12.9	RS6622129	Hitch Pin	3

Note: Only items identified by part number are available individually. Asterisked items are only in the repair kit, RS6635SK.

Items marked + are available in bolt kit, RS6622BK

PROBLEM	Jack will not lift load	Jack will not hold load or handle rises	Jack will not lift to its full height	Jack will not lower completely	Jack will not lift smoothly or jack feels spongy	SOLUTION
✓						The release valve is not closed. Turn the valve clockwise tightly.
✓		✓				Low on hydraulic fluid. Refill the jack to the correct level of hydraulic fluid.
✓						Pump seals and back-up ring are defective. Clean hydraulic fluid passages, replace seals and renew hydraulic fluid. (Must be serviced by qualified service center)
		✓		✓		The hydraulic system is filled with air. Open the release valve, pump handle rapidly (4) full strokes to purge air, close release valve.
			✓			Return spring is broken or linkages binding. Replace spring if broken. Grease pivot shaft, oil all lift arm linkages.
	✓					Discharge ball is not sealing hydraulic system and oil may be dirty. Manually flush hydraulic system by raising and lowering lift arm by hand. Open the release valve, as required to raise and lower the lift arm. Manually raise and lower lift arm.